



**Statistics  
South Africa**

Preferred supplier of quality statistics



# Statistical release

## P0351

# Tourism and Migration

**August 2009**

**Embargoed until:  
26 October 2009  
13:00**

**Enquiries:**

User Information Services  
Tel.: (012) 310 8600 / 4892 / 8390

**Forthcoming issue:**

September 2009

**Expected release date**

30 November 2009

Statistics South Africa • Mbalo-mbalo dza Afrika Tshipembe • Tihlayo-tiko ta Afrika-Dzonga • Dipalopalo tsa Aforika Borwa • Ezezibalo zaseNingizimu Afrika  
Dipalopalo tša Afrika Borwa • Dipalopalo tsa Afrika Borwa • Ubalo lwaseMzantsi Afrika • Telubalo eNingizimu Afrika • iNanimbalo leSewula Afrika • Statistiek Suid-Afrika

**NOTICE**

**Statistics South Africa (Stats SA) has completed its Duration of Stay exercise as part of improving its information on foreign travellers and measurement of foreign tourists. As a result of this exercise, it is now possible to remove SAME DAY visitors and OVERNIGHT visitors (tourists) from the foreign arrivals data it receives from the Department of Home Affairs. This is based on the date on which the arrivals that entered the country for purposes other than work left. Stats SA started publishing information on TOURISTS as defined by United Nations World Tourism Organisation with the January 2009 data. In this month’s release, additional data (graphs and tables) are provided in the APPENDIX for the benefit of users who would like to continue using foreign arrivals (rather than tourists) as the base denominator for comparison and trend analysis purposes.**

**Contents**

	<b>Page</b>
<b>KEY FINDINGS</b>	
<b>1. Travellers</b>	
1.1 Number of travellers .....	2
1.2 Mode of travel of travellers .....	2
<b>2. Tourists</b>	
2.1 Mode of travel of tourists .....	2
2.2 Regional and national distribution of tourists .....	2
2.3 Purpose of visit of tourists .....	3
2.4 Sex and age distribution of tourists .....	3
<b>Figures</b>	
1. Number of tourists from eight leading overseas countries in August 2009 .....	4
2. Number of tourists from eight leading SADC countries in August 2009 .....	4
3. Number of tourists from eight leading ‘other’ African countries in August 2009 .....	5
<b>Tables</b>	
1. Number of South African residents and foreign travellers by travel direction, August 2009 .....	6
2. Number of South African residents and foreign travellers by travel direction and mode of travel, August 2009 .....	7
3. Number of tourists by country of residence and mode of travel, August 2009 .....	8
4. Number of tourists by country of residence and purpose of visit, August 2009 .....	12
5. Number of tourists from overseas, SADC and ‘other’ African regions by sex and age group, August 2009 .....	16
<b>EXPLANATORY NOTES</b>	
1. Introduction .....	17
2. Purpose of the statistical release .....	17
3. Scope and coverage .....	17
4. Data .....	17
5. Limitations .....	18
6. Definitions of terms .....	18
7. Symbols and abbreviations used .....	18
<b>GENERAL INFORMATION</b> .....	19
<b>APPENDIX</b> .....	20

## KEY FINDINGS

### 1. Travellers

#### 1.1 Number of travellers

The routine data collected by the Department of Home Affairs' (DHA) immigration officers at the ports of entry into South Africa show that a total of 2 451 343 travellers (arrivals and departures) passed through South African ports of entry in August 2009. As presented in Table 1, these travellers are made up of 773 084 South African residents and 1 678 259 foreign travellers. A further breakdown of the figures indicates that there were 388 535 and 384 549 South African resident arrivals and departures respectively. The corresponding volumes for foreign arrivals and departures were 895 738 and 782 521 respectively. A comparison between the movements in July 2009 and August 2009 as well as movements in August 2008 and August 2009 indicates that there was an increase in all movements except arrival and departure of South African residents between July 2009 and August 2009. Thus, there was a decline of 13,0% from 446 725 in July 2009 to 388 535 in August 2009 for South African residents arrivals and a decline of 0,5% for their departure from 386 629 in July 2009 to 384 549 in August 2009. Detailed information on the departure of travellers is not available in the movement data. Data on the purpose of travel and the number of days South African travellers intend to spend or spent abroad are not collected by South Africa immigration officers. Hence, it is not possible to categorise them as tourists and non tourists. However, data are available on foreign arrivals for this categorisation. In August 2009, 32 026 (3,6%) arrivals were classified as non-visitors while 863 712 (96,4%) were visitors. The visitors were categorised into three groups: arrivals only comprising of visitors who entered the country in August but did not depart in August (277 545); visitors who came in once and left (358 001); and those who came and left more than once in August (228 166). Visitors were further grouped as same day visitors 225 140 (26,1%) and overnight visitors / tourists 638 572 (73,9%).

#### 1.2 Mode of travel of travellers

Travellers who cross South Africa's borders rarely use trains and ships since they are mainly used for transporting goods. Data presented in Table 2 show that in August 2009, road transport was the most common mode of travel used by 1 737 833 (70,9%) out of the 2 451 343 travellers. The number of travellers who used air transport was 692 200 (28,2%). The arrival data on South African residents show that 130 948 (33,7%) came by air and 255 983 (65,9%) by road. For their departure, 139 835 (36,4%) and 244 484 (63,6%) used air and road transport respectively. In the case of foreign travellers, 206 673 (23,1%) arrived by air. Those who came by road were 670 680 (74,9%). When departing South Africa, 214 744 (27,4%) foreign travellers left by air whilst 566 686 (72,4%) left by road. As shown in Table 2 an overwhelming majority 199 151 (88,5%) of same day visitors arrived in the country by road. Only 25 914 (11,5%) same-day visitors flew into the country. However, data on overnight visitors (tourists) show that, 467 620 (73,2%) used road transport whereas 170 606 (26,7%) came by air.

### 2. Tourists

#### 2.1 Mode of travel of tourists

The country of residence of tourists is used to categorise them into their respective regions and countries. Information on the specific region and country of residence of the tourists and the mode of travel used to enter South Africa is provided in Table 3. In August 2009, a high proportion of overseas tourists arrived in the country by air 126 806 (83,3%) compared to those who came in by road 25 173 (16,5%). This is in contrast to tourists from SADC countries who came into South Africa predominantly by road 439 184 (93,6%) compared to air 29 891 (6,4%). A relatively high proportion 11 813 (85,8%) of tourists from 'other' African countries flew into the country but 1 942 (14,1%) used road transport.

#### 2.2 Regional and national distribution of tourists

In August 2009, overseas tourists came mainly from Europe, 95 667 (62,9%); followed by North America, 24 138 (15,9%); Asia, 16 539 (10,9%); Australasia, 8 377 (5,5%); Central and South America, 4 048 (2,7%); and Middle East, 3 418 (2,2%). Virtually all tourists from Africa came from the SADC countries, 469 192 (97,1%). The distribution of the remaining tourists from Africa is as follows: East and Central Africa, 6 645 (1,4%); West Africa, 6 272 (1,3%) and North Africa 858 (0,2%).

Data presented in Figure 1 indicate that UK, 30 628 (20,1%); USA, 20 966 (13,8%); Germany, 12 838 (8,4%); France, 10 084 (6,6%); Italy, 10 076 (6,6%); The Netherlands 9 453 (6,2%); Australia, 6 593 (4,3%) and India, 4 405 (2,9%) were the eight leading overseas source countries. Tourists from these eight countries constitute 68,9% of all tourists from overseas countries.

The eight leading source countries from SADC (see Figure 2) were Zimbabwe, 138 626 (29,5%); Lesotho, 86 895 (18,5%); Mozambique, 84 949 (18,1%); Swaziland, 64 137 (13,7%); Botswana, 42 254 (9,0%); Namibia, 16 038 (3,4%); Malawi, 14 887 (3,2%) and Zambia, 12 794 (2,7%). Tourists from these eight countries constitute 98,1% of all tourists from SADC countries. The eight leading source countries from 'other' African countries, shown in Figure 3, were Nigeria, 4 146 (30,1%); Kenya, 2 333 (16,9%); Uganda, 968 (7,0%); Ghana, 960 (7,0%); Ethiopia, 691 (5,0%); Gabon, 659 (4,8%); Congo, 559 (4,1%) and Cameroon, 478 (3,5%). Tourists from these eight countries constitute 78,4% of all tourists from 'other' African countries.

### 2.3 Purpose of visit of tourists

As observed from data given in Table 4, in August 2009, an overwhelming majority (97,3%) of tourists was in South Africa for holidays. This is a large difference compared with those who have come to study (1,1%) and those on business (1,4%). A detailed analysis reveals that all the overseas regions had at least 92,0% of their tourists coming to South Africa for holidays. Tourists from Australasia (98,0%), Europe (97,3%), North America (97,0%), Middle East (95,8%), Central and South America (95,6%) and Asia (92,5%) were in South Africa for holidays. Tourists from Middle East and Asia were more diverse in their purpose. Middle East and Asia had 3,4% and 5,7% respectively of their tourists in South Africa for business. Furthermore, students made up 0,7% and 1,2% of Middle East and Asia tourists respectively.

Although the majority (97,7%) of African tourists came to South Africa for holidays, there is a difference between tourists from SADC countries and those from 'other' African countries, namely:

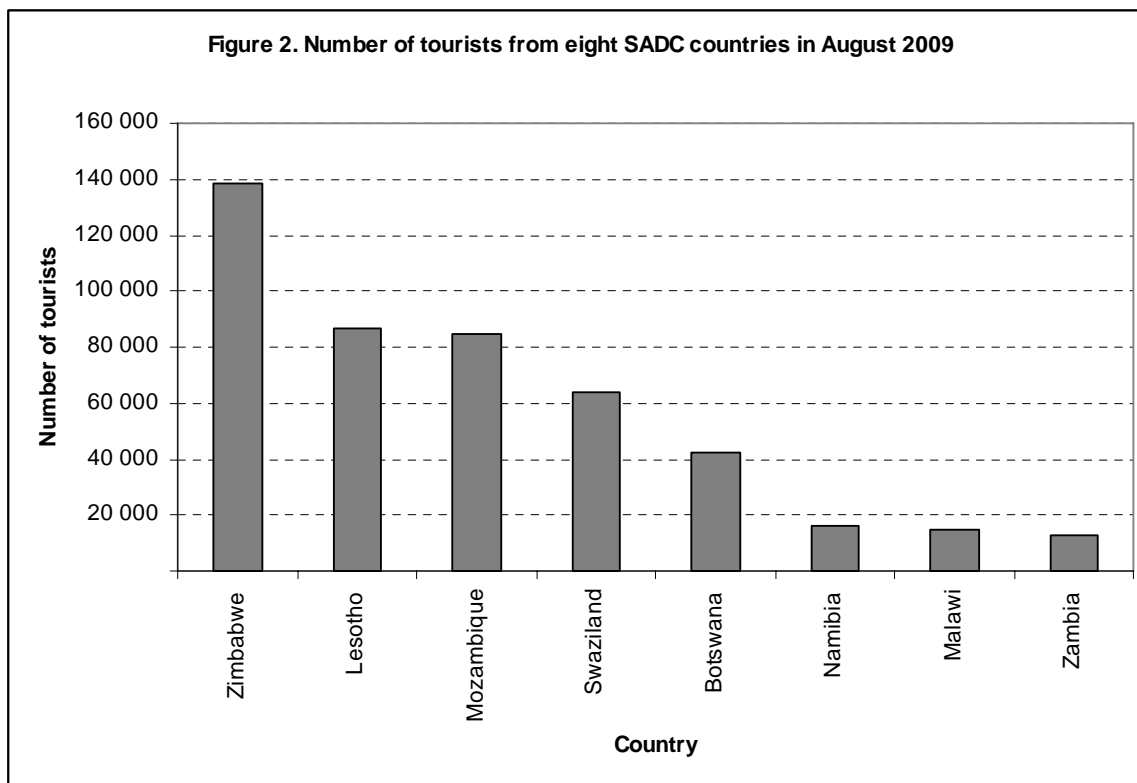
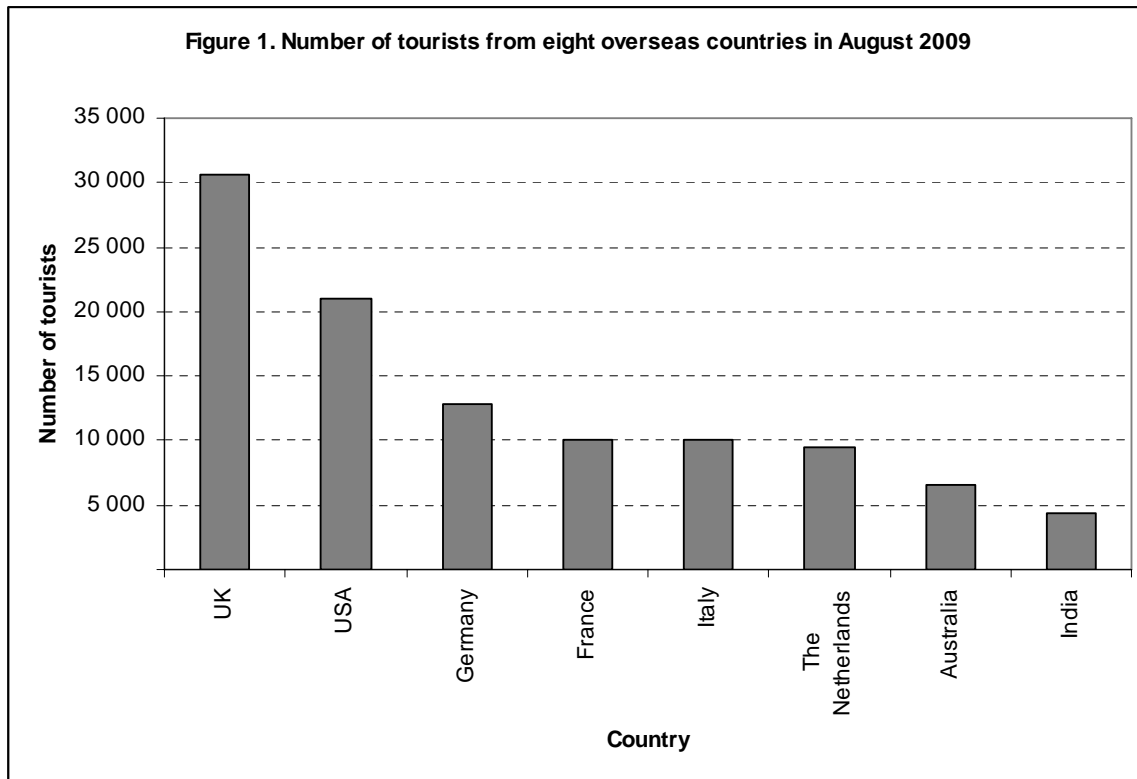
- Whereas 97,9% of tourists from the SADC countries were on holiday; 91,2% of tourists from 'other' African countries were on holiday. Proportionally, the lowest percentage (85,2%) of tourists on holidays came from North Africa, a region from where a relatively large percentage (7,6%) of tourists came for business.
- Overall, North Africa, East and Central Africa and West Africa had 7,6%, 4,0% and 3,0% respectively of their tourists in South Africa for business compared with only 1,1% of business persons among the tourists from SADC countries.
- Similarly, 7,0%; 5,7% and 2,7% of tourists from North Africa; East and Central Africa and West Africa respectively were students compared with only 0,9% among tourists from SADC countries.

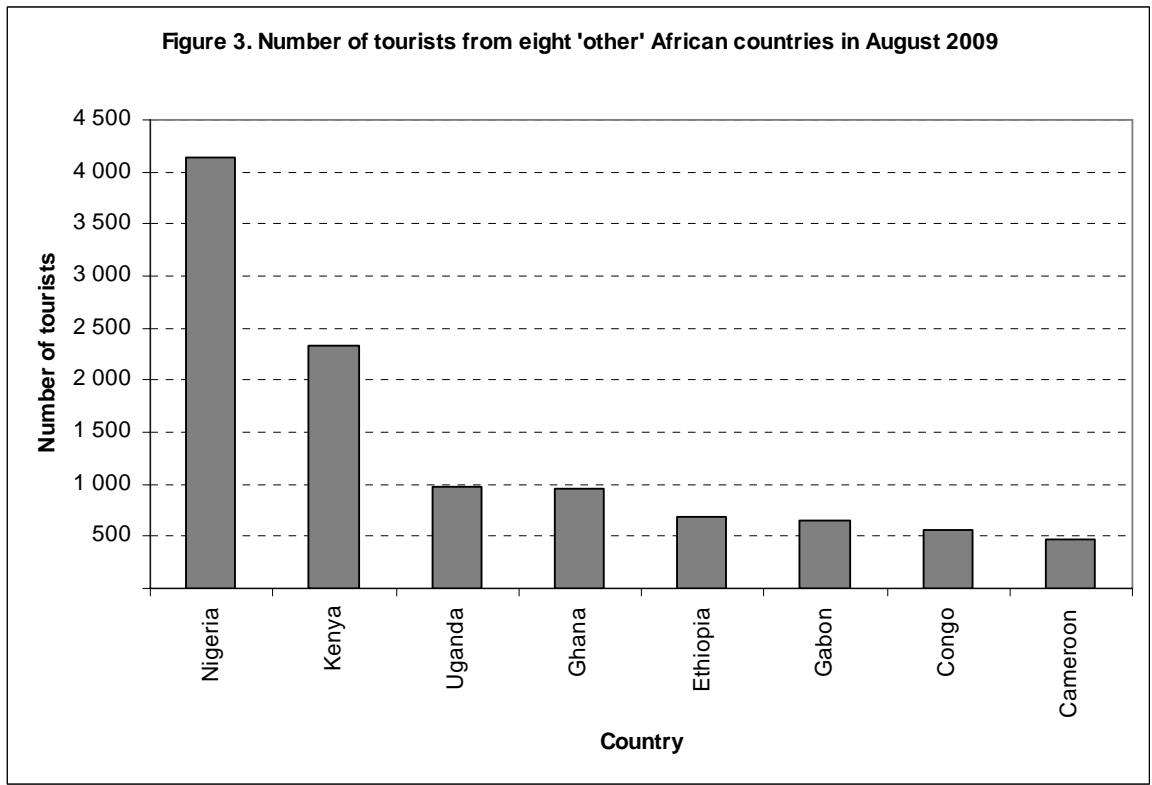
### 2.4 Sex and age distribution of tourists

According to Table 5 in August 2009, there were 346 847 (54,3%) male and 290 923 (45,6%) female tourists. The overseas tourists were made up of 83 932 (55,2%) male tourists and 68 112 (44,8%) female tourists. Tourists from 'other' African countries had a high proportion (65,1%) of males compared with that of SADC (53,7%). The proportions of female tourists from 'other' African countries and SADC countries were 34,9% and 46,1% respectively.

The age of the tourists were categorised into three broad groups namely, those younger than 15 years, those aged 15 up to 64 years, and persons 65 years and older. The overall results presented in Table 5 show that 90,1% of tourists were aged between 15 and 64 years; 6,8% aged less than 15 years and 3,1% aged 65 years and older. Taking the country of residence into consideration, the results further show that 85,2% of overseas tourists were aged 15 up to 64. However, 91,8% and 88,1% of tourists from SADC and 'other' African countries respectively were in the age group 15-64 years. There were very few tourists younger than 15 years and those aged 65 years and older. The data show relatively high proportions of overseas tourists for both males (6,1%) and females (6,0%) who were older persons (i.e. 65 years and older). This is in contrast to tourists from SADC countries which comprised of 1,7% males and 2,6% females and tourists from 'other' African countries which were made up of 1,4% males and 1,5% females aged 65 years and older.

**P J Lehohla**  
**Statistician-General**





**Table 1. Number of South African residents and foreign travellers by travel direction, August 2009**

Travel direction	August	July	August	% change	% change
	2008	2009	2009	August 08 – August 09	July 09 – August 09
<b>Grand Total</b>	<b>2 083 981</b>	<b>2 442 469</b>	<b>2 451 343</b>	<b>17,6</b>	<b>0,4</b>
<b>South African residents</b>	<b>666 132</b>	<b>833 354</b>	<b>773 084</b>	<b>16,1</b>	<b>-7,2</b>
Arrivals	326 075	446 725	388 535	19,2	-13,0
Departures	340 057	386 629	384 549	13,1	-0,5
<b>Foreign travellers</b>	<b>1 417 849</b>	<b>1 609 115</b>	<b>1 678 259</b>	<b>18,4</b>	<b>4,3</b>
Arrivals	752 942	879 884	895 738	19,0	1,8
Departures	664 907	729 231	782 521	17,7	7,3
<b>Foreign Arrivals</b>		<b>879 884</b>	<b>895 738</b>		<b>1,8</b>
Non visitors		34 154	32 026		-6,2
Visitors		845 730	863 712		2,1
<b>Visitors</b>		<b>845 730</b>	<b>863 712</b>		<b>2,1</b>
Arrivals only		294 059	277 545		-5,6
Single trips		338 784	358 001		5,7
Multiple trips		212 887	228 166		7,2
<b>Visitors</b>		<b>845 730</b>	<b>863 712</b>		<b>2,1</b>
Same day		222 316	225 140		1,3
Overnight (tourists)		623 414	638 572		2,4

**Table 2. Number of South African residents and foreign travellers by travel direction and mode of travel, August 2009**

Travel direction	Total	Mode of travel								
		Air					Rail	Road	Sea	Unspecified
		Cape Town	Durban	OR Tambo	Other	TOTAL				
<b>Grand Total</b>	<b>2 451 343</b>	<b>89 187</b>	<b>2 296</b>	<b>592 803</b>	<b>7 914</b>	<b>692 200</b>	<b>2 060</b>	<b>1 737 833</b>	<b>257</b>	<b>18 993</b>
<b>South African residents</b>	<b>773 084</b>	<b>31 355</b>	<b>1 458</b>	<b>232 320</b>	<b>5 650</b>	<b>270 783</b>	<b>301</b>	<b>500 467</b>	<b>108</b>	<b>1 425</b>
Arrivals	388 535	15 517	679	111 864	2 888	130 948	175	255 983	15	1 414
Departures	384 549	15 838	779	120 456	2 762	139 835	126	244 484	93	11
<b>Foreign travellers</b>	<b>1 678 259</b>	<b>57 832</b>	<b>838</b>	<b>360 483</b>	<b>2 264</b>	<b>421 417</b>	<b>1 759</b>	<b>1 237 366</b>	<b>149</b>	<b>17 568</b>
Arrivals	895 738	27 574	413	177 604	1 082	206 673	901	670 680	51	17 433
Departures	782 521	30 258	425	182 879	1 182	214 744	858	566 686	98	135
<b>Visitors</b>	<b>863 712</b>	<b>26 342</b>	<b>403</b>	<b>168 844</b>	<b>931</b>	<b>196 520</b>	<b>126</b>	<b>666 771</b>	<b>29</b>	<b>266</b>
Same day	225 140	631	29	25 121	133	25 914	7	199 151	5	63
Overnight (Tourists)	638 572	25 711	374	143 723	798	170 606	119	467 620	24	203



**Table 3. Number of tourists by country of residence and mode of travel, August 2009**

Country	Mode of travel									
	Grand Total	Air					Rail	Road	Sea	Unspecified
		Cape Town	Durban	OR Tambo	Other	TOTAL				
<b>Grand Total</b>	<b>638 572</b>	<b>25 711</b>	<b>374</b>	<b>143 723</b>	<b>798</b>	<b>170 606</b>	<b>119</b>	<b>467 620</b>	<b>24</b>	<b>203</b>
<b>Overseas</b>	<b>152 187</b>	<b>23 810</b>	<b>147</b>	<b>102 341</b>	<b>508</b>	<b>126 806</b>	<b>97</b>	<b>25 173</b>	<b>20</b>	<b>91</b>
<b>Europe</b>	<b>95 667</b>	<b>17 217</b>	<b>104</b>	<b>58 721</b>	<b>258</b>	<b>76 300</b>	<b>61</b>	<b>19 235</b>	<b>14</b>	<b>57</b>
Austria	1 262	205	-	867	6	1 078	1	183	-	-
Belgium	2 777	398	6	1 634	10	2 048	-	727	-	2
Denmark	1 085	119	2	800	3	924	1	159	1	-
France	10 084	1 265	17	6 205	35	7 522	3	2 551	2	6
Germany	12 838	2 291	4	8 216	25	10 536	8	2 271	5	18
Ireland	2 404	603	6	1 309	9	1 927	-	477	-	-
Italy	10 076	1 695	7	6 192	10	7 904	8	2 152	-	12
Norway	840	215	-	543	4	762	1	77	-	-
Portugal	2 530	114	24	1 383	11	1 532	1	997	-	-
Spain	4 275	609	1	2 797	8	3 415	3	857	-	-
Sweden	1 092	226	-	720	1	947	-	145	-	-
Switzerland	1 665	241	1	1 096	8	1 346	-	319	-	-
The Netherlands	9 453	1 698	1	4 380	10	6 089	-	3 363	-	1
UK	30 628	6 656	34	19 434	95	26 219	33	4 360	2	14
Other	4 658	882	1	3 145	23	4 051	2	597	4	4
<b>North America</b>	<b>24 138</b>	<b>2 773</b>	<b>8</b>	<b>18 810</b>	<b>166</b>	<b>21 757</b>	<b>6</b>	<b>2 367</b>	<b>-</b>	<b>8</b>
Canada	3 169	385	-	2 316	14	2 715	-	454	-	-
USA	20 966	2 388	8	16 492	152	19 040	6	1 912	-	8
Other	3	-	-	2	-	2	-	1	-	-
<b>Central and South America</b>	<b>4 048</b>	<b>349</b>	<b>9</b>	<b>3 190</b>	<b>13</b>	<b>3 561</b>	<b>8</b>	<b>476</b>	<b>-</b>	<b>3</b>
Argentina	621	198	3	396	-	597	2	22	-	-
Brazil	2 235	33	2	1 930	6	1 971	5	257	-	2
Chile	211	15	2	173	1	191	1	19	-	-
Other	981	103	2	691	6	802	-	178	-	1
<b>Australasia</b>	<b>8 377</b>	<b>505</b>	<b>14</b>	<b>7 024</b>	<b>23</b>	<b>7 566</b>	<b>-</b>	<b>809</b>	<b>1</b>	<b>1</b>
Australia	6 593	382	14	5 559	17	5 972	-	619	1	1

**Table 3. Number of tourists by country of residence and mode of travel, August 2009 (continued)**

Country	Mode of travel									
	Grand Total	Air					Rail	Road	Sea	Unspecified
		Cape Town	Durban	OR Tambo	Other	TOTAL				
New Zealand	1 724	115	-	1 431	5	1 551	-	173	-	-
Other	60	8	-	34	1	43	-	17	-	-
<b>Middle East</b>	<b>3 418</b>	<b>437</b>	<b>1</b>	<b>2 728</b>	<b>7</b>	<b>3 173</b>	<b>4</b>	<b>238</b>	<b>-</b>	<b>3</b>
Iran	361	29	-	320	2	351	2	8	-	-
Israel	1 642	44	-	1 417	2	1 463	2	176	-	1
Saudi Arabia	637	201	-	424	-	625	-	10	-	2
Other	778	163	1	567	3	734	-	44	-	-
<b>Asia</b>	<b>16 539</b>	<b>2 529</b>	<b>11</b>	<b>11 868</b>	<b>41</b>	<b>14 449</b>	<b>18</b>	<b>2 048</b>	<b>5</b>	<b>19</b>
China	2 887	328	2	2 386	2	2 718	-	161	-	8
Hong Kong	860	67	-	784	-	851	-	9	-	-
India	4 405	1 085	1	2 651	5	3 742	5	654	1	3
Japan	2 191	181	2	1 840	9	2 032	2	151	-	6
Korea	1 621	205	-	1 248	1	1 454	3	163	-	1
Malaysia	542	164	-	342	-	506	-	36	-	-
Pakistan	825	41	4	483	1	529	7	288	-	1
Taiwan	764	186	2	433	14	635	-	129	-	-
Thailand	589	65	-	495	-	560	-	29	-	-
Other	1 855	207	-	1 206	9	1 422	1	428	4	-
<b>Africa</b>	<b>482 967</b>	<b>1 731</b>	<b>225</b>	<b>39 463</b>	<b>285</b>	<b>41 704</b>	<b>21</b>	<b>441 126</b>	<b>4</b>	<b>112</b>
<b>SADC</b>	<b>469 192</b>	<b>1 599</b>	<b>222</b>	<b>27 869</b>	<b>201</b>	<b>29 891</b>	<b>14</b>	<b>439 184</b>	<b>4</b>	<b>99</b>
Angola	2 861	111	-	2 513	14	2 638	3	213	-	7
Botswana	42 254	3	1	1 606	50	1 660	-	40 575	-	19
DRC	3 379	1	-	2 653	4	2 658	-	712	-	9
Lesotho	86 895	1	-	407	-	408	-	86 461	-	26
Madagascar	229	1	-	206	1	208	-	20	-	1
Malawi	14 887	6	-	2 057	1	2 064	-	12 816	-	7
Mauritius	1 002	105	83	675	-	863	-	138	-	1
Mozambique	84 949	72	97	1 828	20	2 017	1	82 927	-	4
Namibia	16 038	1 227	2	2 285	21	3 535	3	12 483	-	17
Swaziland	64 137	4	33	552	31	620	1	63 515	-	1

**Table 3. Number of tourists by country of residence and mode of travel, August 2009 (continued)**

Country	Mode of travel									
	Grand Total	Air					Rail	Road	Sea	Unspecified
		Cape Town	Durban	OR Tambo	Other	TOTAL				
Tanzania	1 141	8	3	802	-	813	-	328	-	-
Zambia	12 794	5	1	3 946	24	3 976	-	8 816	-	2
Zimbabwe	138 626	55	2	8 339	35	8 431	6	130 180	4	5
<b>'Other' African</b>	<b>13 775</b>	<b>132</b>	<b>3</b>	<b>11 594</b>	<b>84</b>	<b>11 813</b>	<b>7</b>	<b>1 942</b>	-	<b>13</b>
<b>East and Central Africa</b>	<b>6 645</b>	<b>38</b>	-	<b>5 382</b>	<b>40</b>	<b>5 460</b>	<b>2</b>	<b>1 175</b>	-	<b>8</b>
Burundi	103	-	-	83	-	83	-	20	-	-
Cameroon	478	4	-	434	-	438	-	40	-	-
Central African Republic	17	-	-	15	-	15	-	2	-	-
Chad	30	-	-	29	-	29	-	1	-	-
Comoros	23	-	-	22	-	22	-	1	-	-
Congo	559	14	-	398	6	418	-	140	-	1
Djibouti	5	-	-	3	-	3	-	2	-	-
Equat Guinea	42	-	-	16	17	33	-	9	-	-
Eritrea	49	1	-	39	-	40	2	7	-	-
Ethiopia	691	2	-	494	-	496	-	190	-	5
Gabon	659	2	-	641	2	645	-	14	-	-
Kenya	2 333	5	-	2 004	11	2 020	-	312	-	1
Reunion	25	-	-	25	-	25	-	-	-	-
Rwanda	264	2	-	240	1	243	-	20	-	1
Sao Tome and Principe	16	1	-	15	-	16	-	-	-	-
Seychelles	177	-	-	174	1	175	-	2	-	-
Somalia	206	2	-	4	-	6	-	200	-	-
Uganda	968	5	-	746	2	753	-	215	-	-
<b>West Africa</b>	<b>6 272</b>	<b>48</b>	-	<b>5 510</b>	<b>27</b>	<b>5 585</b>	<b>5</b>	<b>678</b>	-	<b>4</b>
Benin	114	-	-	91	1	92	-	21	-	1
Burkina Faso	46	-	-	44	-	44	-	2	-	-
Cape Verde Island	53	3	-	33	2	38	-	15	-	-
Cote D'Ivoire	201	-	-	187	-	187	-	14	-	-
Gambia	61	-	-	56	-	56	-	5	-	-

**Table 3. Number of tourists by country of residence and mode of travel, August 2009 (concluded)**

Country	Mode of travel									
	Grand Total	Air					Rail	Road	Sea	Unspecified
		Cape Town	Durban	OR Tambo	Other	TOTAL				
Ghana	960	5	-	858	1	864	1	95	-	-
Guinea	128	1	-	70	-	71	-	57	-	-
Guinea-Bissau	19	-	-	12	-	12	-	7	-	-
Liberia	39	-	-	32	-	32	-	7	-	-
Madeira Islands	6	2	-	2	-	4	-	2	-	-
Mali	94	3	-	70	-	73	-	21	-	-
Mauritania	15	-	-	14	-	14	-	-	-	1
Niger	24	-	-	22	-	22	-	2	-	-
Nigeria	4 146	30	-	3 702	23	3 755	2	388	-	1
Saint Helena	14	2	-	1	-	3	2	9	-	-
Senegal	246	2	-	236	-	238	-	7	-	1
Sierra Leone	60	-	-	44	-	44	-	16	-	-
Togo	46	-	-	36	-	36	-	10	-	-
<b>North Africa</b>	<b>858</b>	<b>46</b>	<b>3</b>	<b>702</b>	<b>17</b>	<b>768</b>	<b>-</b>	<b>89</b>	<b>-</b>	<b>1</b>
Algeria	82	2	1	61	11	75	-	7	-	-
Egypt	343	9	-	312	-	321	-	22	-	-
Libya	83	3	2	37	6	48	-	35	-	-
Morocco	105	9	-	88	-	97	-	8	-	-
The Sudan	148	17	-	117	-	134	-	13	-	1
Tunisia	96	6	-	86	-	92	-	4	-	-
Western Sahara	1	-	-	1	-	1	-	-	-	-
<b>Unspecified</b>	<b>3 418</b>	<b>170</b>	<b>2</b>	<b>1 919</b>	<b>5</b>	<b>2 096</b>	<b>1</b>	<b>1 321</b>	<b>-</b>	<b>-</b>

**Table 4. Number of tourists by country of residence and purpose of visit, August 2009**

Country	Grand Total	Business	Holiday	Study	Transit
<b>Grand Total</b>	<b>638 572</b>	<b>8 974</b>	<b>621 299</b>	<b>6 813</b>	<b>1 486</b>
<b>Overseas</b>	<b>152 187</b>	<b>3 365</b>	<b>147 195</b>	<b>1 059</b>	<b>568</b>
<b>Europe</b>	<b>95 667</b>	<b>1 646</b>	<b>93 127</b>	<b>627</b>	<b>267</b>
Austria	1 262	20	1 239	3	-
Belgium	2 777	46	2 713	16	2
Denmark	1 085	29	1 039	12	5
France	10 084	128	9 772	145	39
Germany	12 838	286	12 423	107	22
Ireland	2 404	35	2 355	12	2
Italy	10 076	62	9 975	10	29
Norway	840	23	801	15	1
Portugal	2 530	14	2 504	6	6
Spain	4 275	22	4 241	4	8
Sweden	1 092	42	1 015	32	3
Switzerland	1 665	47	1 598	17	3
The Netherlands	9 453	115	9 249	59	30
UK	30 628	633	29 757	143	95
Other	4 658	144	4 446	46	22
<b>North America</b>	<b>24 138</b>	<b>455</b>	<b>23 416</b>	<b>167</b>	<b>100</b>
Canada	3 169	64	3 072	25	8
USA	20 966	391	20 341	142	92
Other	3	-	3	-	-
<b>Central and South America</b>	<b>4 048</b>	<b>73</b>	<b>3 868</b>	<b>37</b>	<b>70</b>
Argentina	621	19	584	2	16
Brazil	2 235	28	2 153	16	38
Chile	211	7	201	1	2
Other	981	19	930	18	14
<b>Australasia</b>	<b>8 377</b>	<b>129</b>	<b>8 209</b>	<b>10</b>	<b>29</b>
Australia	6 593	107	6 455	9	22

**Table 4. Number of tourists by country of residence and purpose of visit, August 2009 (continued)**

<b>Country</b>	<b>Grand Total</b>	<b>Business</b>	<b>Holiday</b>	<b>Study</b>	<b>Transit</b>
New Zealand	1 724	20	1 696	1	7
Other	60	2	58	-	-
<b>Middle East</b>	<b>3 418</b>	<b>116</b>	<b>3 273</b>	<b>24</b>	<b>5</b>
Iran	361	29	324	8	-
Israel	1 642	32	1 601	6	3
Saudi Arabia	637	5	631	1	-
Other	778	50	717	9	2
<b>Asia</b>	<b>16 539</b>	<b>946</b>	<b>15 302</b>	<b>194</b>	<b>97</b>
China	2 887	146	2 687	41	13
Hong Kong	860	2	857	-	1
India	4 405	546	3 792	47	20
Japan	2 191	32	2 140	10	9
Korea	1 621	23	1 544	41	13
Malaysia	542	9	523	8	2
Pakistan	825	42	771	7	5
Taiwan	764	23	727	12	2
Thailand	589	12	573	3	1
Other	1 855	111	1 688	25	31
<b>Africa</b>	<b>482 967</b>	<b>5 536</b>	<b>471 782</b>	<b>4 733</b>	<b>916</b>
<b>SADC</b>	<b>469 192</b>	<b>5 020</b>	<b>459 213</b>	<b>4 121</b>	<b>838</b>
Angola	2 861	51	2 606	165	39
Botswana	42 254	67	40 993	1 114	80
DRC	3 379	72	3 162	113	32
Lesotho	86 895	38	86 093	379	385
Madagascar	229	7	200	13	9
Malawi	14 887	240	14 578	57	12
Mauritius	1 002	17	967	15	3
Mozambique	84 949	367	84 410	153	19
Namibia	16 038	1 675	13 947	373	43
Swaziland	64 137	484	62 626	990	37

**Table 4. Number of tourists by country of residence and purpose of visit, August 2009 (continued)**

<b>Country</b>	<b>Grand Total</b>	<b>Business</b>	<b>Holiday</b>	<b>Study</b>	<b>Transit</b>
Tanzania	1 141	67	1 035	38	1
Zambia	12 794	920	11 750	112	12
Zimbabwe	138 626	1 015	136 846	599	166
<b>'Other' African</b>	<b>13 775</b>	<b>516</b>	<b>12 569</b>	<b>612</b>	<b>78</b>
<b>East and Central Africa</b>	<b>6 645</b>	<b>263</b>	<b>5 966</b>	<b>381</b>	<b>35</b>
Burundi	103	4	88	11	-
Cameroon	478	20	406	51	1
Central African Republic	17	6	9	2	-
Chad	30	3	25	2	-
Comoros	23	1	22	-	-
Congo	559	15	525	16	3
Djibouti	5	2	3	-	-
Equat Guinea	42	4	34	4	-
Eritrea	49	5	43	1	-
Ethiopia	691	18	653	20	-
Gabon	659	8	598	50	3
Kenya	2 333	123	2 067	126	17
Reunion	25	-	25	-	-
Rwanda	264	6	209	48	1
Sao Tome and Principe	16	2	13	1	-
Seychelles	177	3	174	-	-
Somalia	206	-	206	-	-
Uganda	968	43	866	49	10
<b>West Africa</b>	<b>6 272</b>	<b>188</b>	<b>5 872</b>	<b>171</b>	<b>41</b>
Benin	114	2	111	1	-
Burkina Faso	46	8	35	3	-
Cape Verde Island	53	2	50	-	1
Cote D'Ivoire	201	14	175	11	1
Gambia	61	9	49	-	3

**Table 4. Number of tourists by country of residence and purpose of visit, August 2009 (concluded)**

Country	Grand Total	Business	Holiday	Study	Transit
Ghana	960	18	918	20	4
Guinea	128	3	121	3	1
Guinea-Bissau	19	1	16	1	1
Liberia	39	4	34	1	-
Madeira Islands	6	-	6	-	-
Mali	94	10	71	11	2
Mauritania	15	-	14	1	-
Niger	24	4	19	1	-
Nigeria	4 146	87	3 941	110	8
Saint Helena	14	-	14	-	-
Senegal	246	21	199	7	19
Sierra Leone	60	2	57	-	1
Togo	46	3	42	1	-
<b>North Africa</b>	<b>858</b>	<b>65</b>	<b>731</b>	<b>60</b>	<b>2</b>
Algeria	82	3	78	1	-
Egypt	343	31	294	18	-
Libya	83	2	75	5	1
Morocco	105	10	84	11	-
The Sudan	148	11	114	22	1
Tunisia	96	8	85	3	-
Western Sahara	1	-	1	-	-
<b>Unspecified</b>	<b>3 418</b>	<b>73</b>	<b>2 322</b>	<b>1 021</b>	<b>2</b>



**Table 5. Number of tourists from overseas, SADC and 'other' African regions by sex and age group, August 2009**

Sex	Age group	Total	Region			
			Overseas	SADC	'other' African	Unspecified
<b>All</b>	<b>Total</b>	<b>638 572</b>	<b>152 188</b>	<b>469 194</b>	<b>13 778</b>	<b>3 422</b>
	< 15	43 411	13 279	28 159	1 441	542
	15-64	575 223	129 624	430 647	12 136	2 816
	65+	19 602	9 261	10 084	194	63
	Unspecified	336	24	304	7	1
<b>Males</b>	<b>Total</b>	<b>346 847</b>	<b>83 932</b>	<b>252 170</b>	<b>8 963</b>	<b>1 782</b>
	< 15	21 746	6 810	13 935	724	277
	15-64	315 245	71 958	233 713	8 109	1 465
	65+	9 720	5 156	4 400	124	40
	Unspecified	136	8	122	6	-
<b>Females</b>	<b>Total</b>	<b>290 923</b>	<b>68 112</b>	<b>216 371</b>	<b>4 810</b>	<b>1 630</b>
	< 15	21 665	6 468	14 222	714	261
	15-64	259 289	57 550	196 368	4 025	1 346
	65+	9 819	4 084	5 643	70	22
	Unspecified	150	10	138	1	1
<b>Unspecified</b>	<b>Total</b>	<b>802</b>	<b>144</b>	<b>653</b>	<b>5</b>	<b>10</b>
	< 15	-	1	2	3	4
	15-64	689	116	566	2	5
	65+	63	21	41	-	1
	Unspecified	50	6	44	-	-

## EXPLANATORY NOTES

### 1. Introduction

Legal movements across South African borders as well as legal immigration into South Africa fall under the jurisdiction of the DHA. Stats SA then processes and publishes this information.

Administrative data sources from the DHA, that is, information from all the country's ports of entry and applications for permanent residence constitute the only comprehensive source of information on foreign arrivals and departures, documented immigrants and emigrants. The information from this source of data provides the best national coverage (both in terms of space and time) of the population movements of South African residents and foreign travellers. The data:

- can be used to estimate, monitor and understand salient characteristics of foreign travellers and volumes of South African residents travelling outside South Africa;
- provide information that can be used to (a) assess the extent of government's progress in strengthening bilateral political and economic relations by assessing the number of international tourist arrivals; and (b) benchmark surveys focusing on demand for local tourism services by foreign travellers.

The information on documented migrants provides crucial information on receiving countries of South African emigrants which could be targeted in initiatives geared towards attracting back migrants into the country. In addition, the data on permanent residents are valuable in assessing not only the demographic and economic profiles of immigrants but also their contribution to national social and economic programmes.

### 2. Purpose of the statistical release

This release reports on arrivals and departures of foreign and South African travellers. Detailed information on the gender and age structure; mode of travel; national and regional distribution; and purpose of travel of overnight visitors or tourists are provided.

### 3. Scope and coverage

This release covers all the data as received from the DHA. The arrivals of foreign travellers are more detailed than departures as they are reported by mode of travel, gender, age and purpose of visit whereas statistics on South African residents are reported by mode of travel. Statistics on documented migration, i.e. self-declared emigrants and documented immigrants, are currently not reported due to the unavailability of data from the DHA.

### 4. Data

Information published in this release is based on data obtained from the following data sources within the DHA.

- Data routinely collected by immigration officers at all land, air and sea entry ports on all travellers (South African residents and foreign travellers) arriving into or departing from South Africa are captured into the DHA's population Movement Control System (MCS). The counts / statistics relate to the number of individual movements, rather than to the number of people. Hence, the multiple movements of individual people during the calendar month are each counted separately. Generally the data are collected directly from travel documents either by scanning or capturing onto the port's electronic database. No forms or cards are used (except in rare occasions when the capturing system is down) to collect information from travellers. Individual ports regularly transmit data onto the national database at the head office of the DHA.
- Statistics South Africa (Stats SA) downloads the data covering a particular calendar month from the mainframe of the State Information Technology Agency (SITA), where the DHA stores its data.
- As part of data interrogation, data from the OR Tambo International Airport, which has the highest volume of travellers, are compared with passenger statistics from the Airport Company of South Africa (ACSA). As expected, in any specific month, an increase in the volume of passengers reported by ACSA has been accompanied by an increase in the volume of travellers recorded by DHA. A similar pattern was also observed when the volume of travellers decreased. However, the volume of passengers recorded by ACSA is higher than that of the DHA because of, among other reasons, travellers who are in transit and those who boarded airplanes but refused entry into the country. In August 2009, the DHA data was 29,1% lower than that of ACSA.

## 5. Limitations

The information on the total number of arrivals and departures of South African residents is collected from the scanning of passports. However, data are not collected from passengers on country visited; country of final destination, the duration of stay; intended duration of stay and purpose of visit. With this limitation, it is impossible to identify the number of tourists from the data on South African residents.

Due to unavailability of data from the DHA, information on documented immigrants is not included in this current publication. The documented immigration information will be provided as soon as it is made available to Stats SA.

## 6. Definitions of terms

### 6.1 Definitions used by the United Nations World Tourism Organisation (UNWTO)

**Traveller** is someone who moves between different geographical locations for any purpose and any duration.

**Visitor** refers to any person travelling to a place other than that of his/her usual environment for less than 12 months and whose main purpose of the trip is other than the exercise of an activity remunerated from within the place visited.

**Same-day visitor** is a visitor who visits a place for less than one night.

**Tourist** (overnight visitor) is a visitor who stays at least one night in collective or private accommodation in the place visited.

**Tourism** comprises the activities of persons travelling to, and staying in places outside their usual environment, for not more than one consecutive year, for leisure, business and other purposes. The usual environment of a person consists of a certain area around his/her place of residence, plus all other places he/she frequently visits.

### 6.2 Definitions used specifically in this report

**South African resident:** refers to either a South African citizen or a non-South African citizen with a South African permanent residence permit.

**Foreign traveller:** refers to a traveller who is not a South African citizen or permanent resident.

**Region:** refers to the following country classification: Overseas: Europe, North America, Central and South America, Australasia, the Middle East, Asia. Africa: SADC, East and Central Africa, West Africa and North Africa.

**Country:** refers to individual countries within a region. The country of residence is used. The country of residence should not be confused with the country from which the visitor travelled.

**Africa:** refers to all the countries in Africa (both mainland and island countries).

**SADC:** refers to the thirteen countries, excluding South Africa, that belong to the Southern African Development Community.

**'other' African:** refers to all non SADC African countries.

**Overseas:** refers to all countries outside Africa

**Trip:** refers to the arrival and departure of a visitor in a specified month

## 7. Symbols and abbreviations used

- = nil  
Unspec. = unspecified

## General information

Stats SA publishes approximately 300 different statistical releases each year. It is not economically viable to produce them in more than one of South Africa's eleven official languages. Since the releases are used extensively, not only locally but also by international economic and social-scientific communities, Stats SA releases are published in English.

Stats SA has copyright on this publication. Users must apply the information as they wish, provided that they acknowledge Stats SA as the source of the basic data wherever they process, apply, utilise, publish or distribute the data; and also that they specify that the relevant application and analysis (where applicable) result from their own processing of the data.

## Advance release calendar

An advance release calendar is disseminated on [www.statssa.gov.za](http://www.statssa.gov.za)

## Stats SA products

A complete set of Stats SA publications is available at the Stats SA Library and the following libraries:

National Library of South Africa, Pretoria Division  
National Library of South Africa, Cape Town Division  
Natal Society Library, PieterAaprifzburg  
Library of Parliament, Cape Town  
Bloemfontein Public Library  
Johannesburg Public Library  
Eastern Cape Library Services, King William's Town  
Central Regional Library, Polokwane  
Central Reference Library, Nelspruit  
Central Reference Collection, Kimberley  
Central Reference Library, Mafikeng

Stats SA also provides a subscription service.

## Electronic services

A large range of data are available via on-line services, diskette and computer printouts. For more details about our electronic data, contact user information services.

You can visit us on the Internet at: [www.statssa.gov.za](http://www.statssa.gov.za)

## Enquiries

Telephone: (012) 310 8600/ 8390/ 8351/ 4892/ 8496/ 8095 (user information services)  
(012) 310 8692 (technical enquiries)  
(012) 310 8161 (orders)  
(012) 310 4883/4885/8018 (library)

Fax: (012) 310 8500/ 8495 (user information services)  
(012) 310 6937 (technical enquiries)

Email: [tshwarog@statssa.gov.za](mailto:tshwarog@statssa.gov.za) (technical enquiries)  
[info@statssa.gov.za](mailto:info@statssa.gov.za) (user information services)  
[distribution@statssa.gov.za](mailto:distribution@statssa.gov.za) (orders)

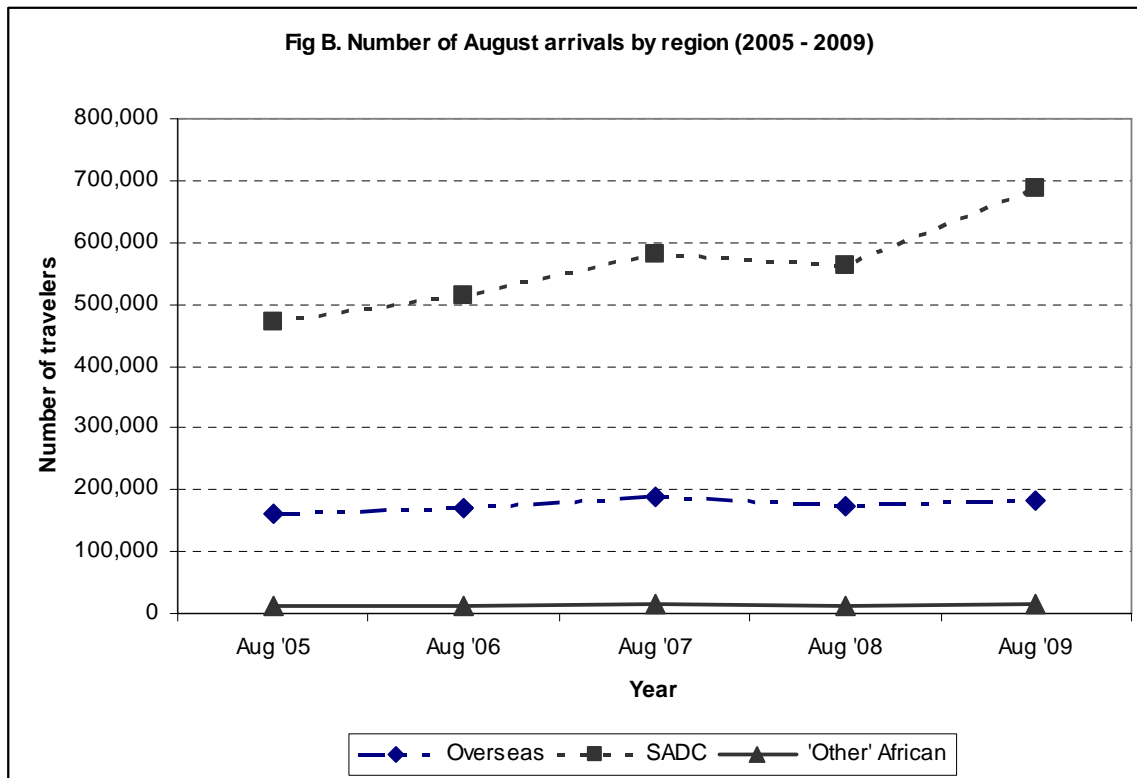
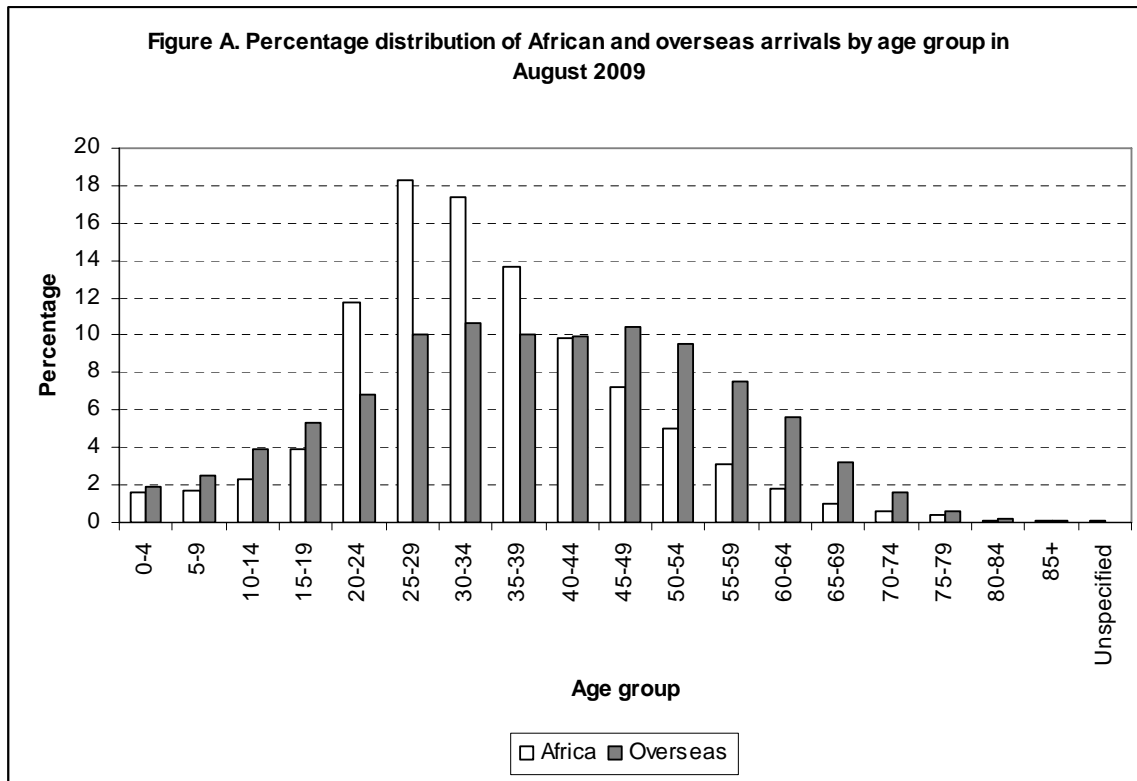
Postal address: Private Bag X44, Pretoria, 0001

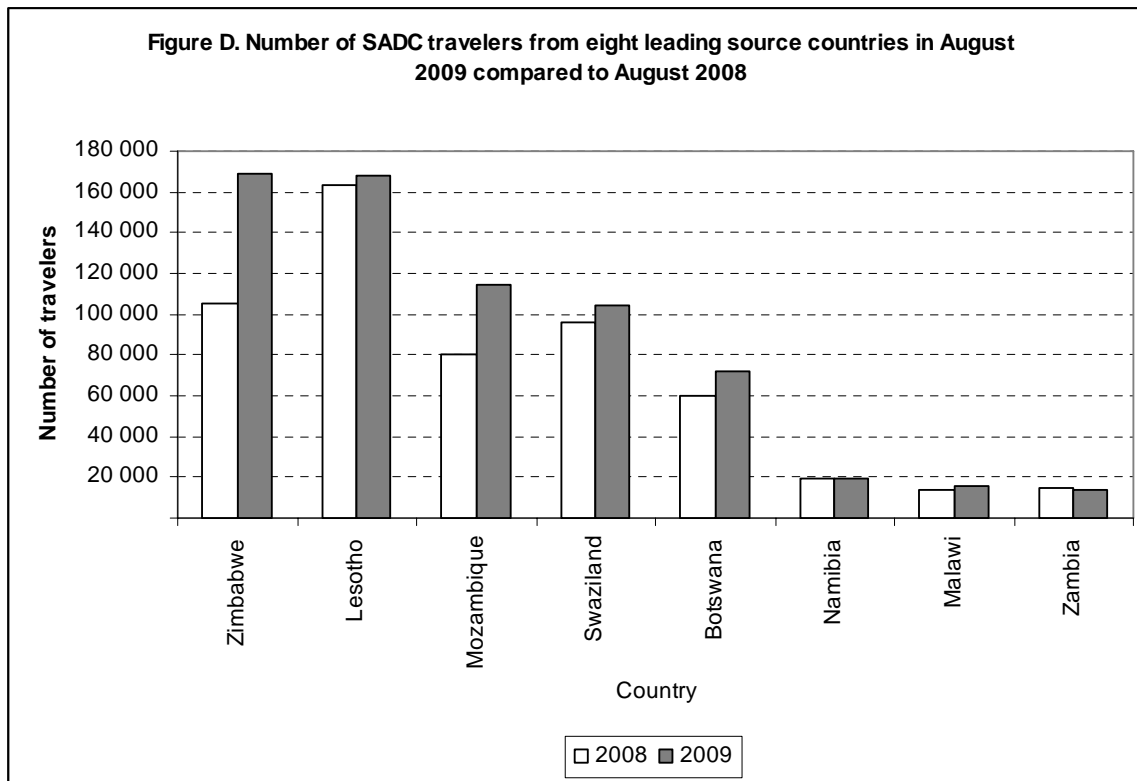
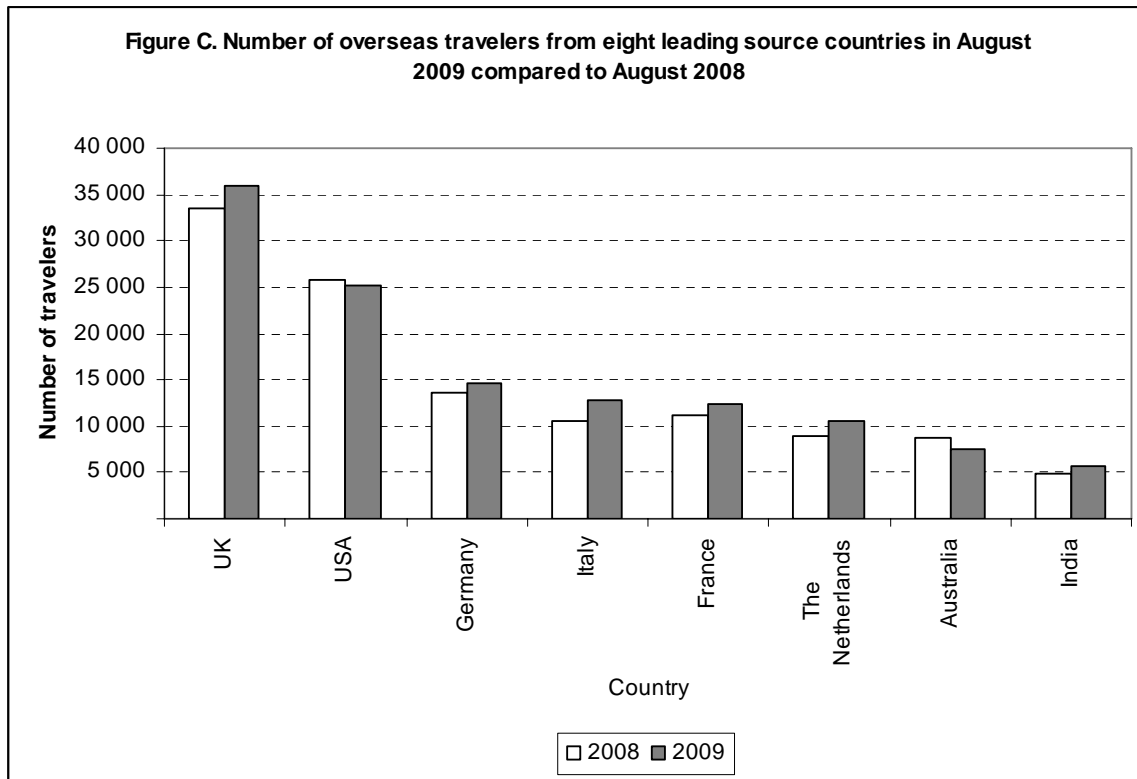
*Produced by Stats SA*

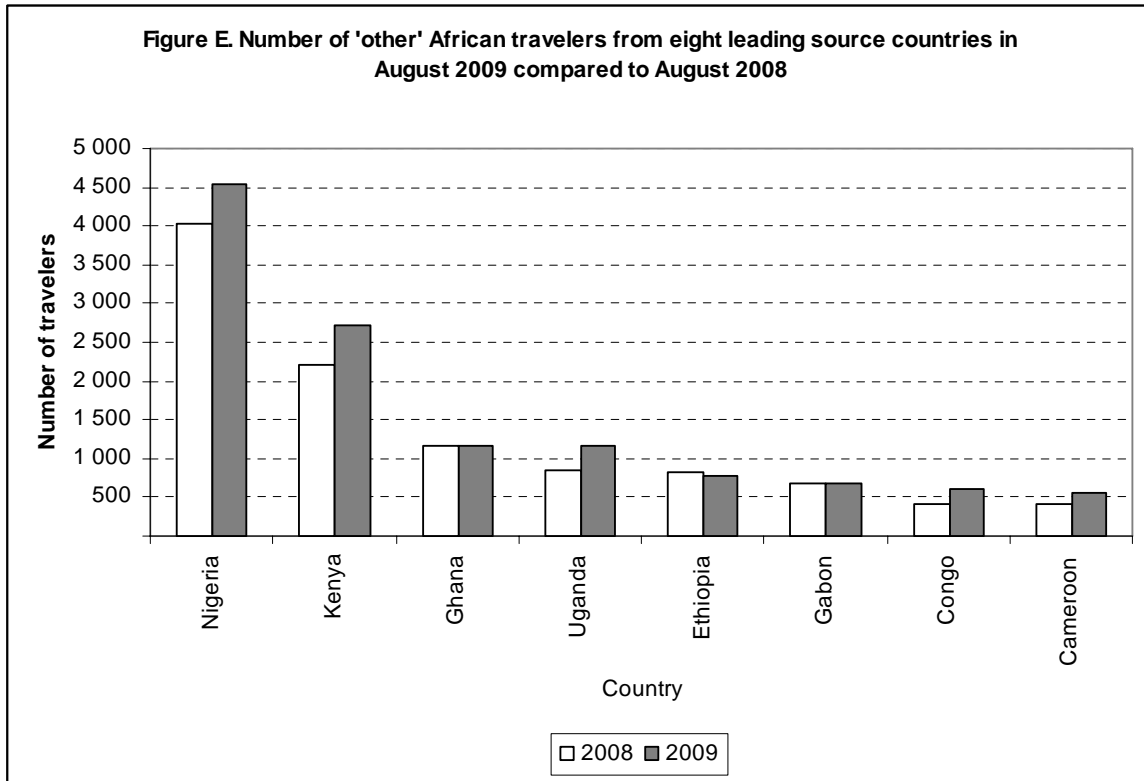
---

**APPENDIX**

**AUGUST 2009 GRAPHS AND TABLES BASED ON FOREIGN ARRIVALS**









**Table A. Number of South African residents and foreign travellers by travel direction**

Travel direction	August	July	August	% change	% change
	2008	2009	2009	August 08 – August 09	July 09 – August 09
<b>Grand Total</b>	<b>2 083 981</b>	<b>2 442 469</b>	<b>2 451 343</b>	<b>17,6</b>	<b>0,4</b>
<b>South African residents</b>	<b>666 132</b>	<b>833 354</b>	<b>773 084</b>	<b>16,1</b>	<b>-7,2</b>
Arrivals	326 075	446 725	388 535	19,2	-13,0
Departures	340 057	386 629	384 549	13,1	-0,5
<b>Foreign travellers</b>	<b>1 417 849</b>	<b>1 609 115</b>	<b>1 678 259</b>	<b>18,4</b>	<b>4,3</b>
Arrivals	752 942	879 884	895 738	19,0	1,8
Departures	664 907	729 231	782 521	17,7	7,3

**Table B. Number of South African residents and foreign travellers by travel direction and mode of travel**

Travel direction	Total	Mode of travel (August 2009)								
		Air					Rail	Road	Sea	Unspecified
		(Cape Town)	(Durban)	(OR Tambo)	(Other)	Total				
<b>Grand Total</b>	<b>2 451 343</b>	<b>89 187</b>	<b>2 296</b>	<b>592 803</b>	<b>7 914</b>	<b>692 200</b>	<b>2 060</b>	<b>1 737 833</b>	<b>257</b>	<b>18 993</b>
<b>South African residents</b>	<b>773 084</b>	<b>31 355</b>	<b>1 458</b>	<b>232 320</b>	<b>5 650</b>	<b>270 783</b>	<b>301</b>	<b>500 467</b>	<b>108</b>	<b>1 425</b>
Arrivals	388 535	15 517	679	111 864	2 888	130 948	175	255 983	15	1 414
Departures	384 549	15 838	779	120 456	2 762	139 835	126	244 484	93	11
<b>Foreign travellers</b>	<b>1 678 259</b>	<b>57 832</b>	<b>838</b>	<b>360 483</b>	<b>2 264</b>	<b>421 417</b>	<b>1 759</b>	<b>1 237 366</b>	<b>149</b>	<b>17 568</b>
Arrivals	895 738	27 574	413	177 604	1 082	206 673	901	670 680	51	17 433
Departures	782 521	30 258	425	182 879	1 182	214 744	858	566 686	98	135

**Table C. Number of foreign arrivals by country and mode of travel**

Country	August		Mode of travel (August 2009)								
	2008	2009	Air					Rail	Road	Sea	Unspecified
			Cape Town	Durban	OR Tambo	Other	Total				
<b>Grand Total</b>	<b>752 942</b>	<b>895 738</b>	<b>27 574</b>	<b>413</b>	<b>177 604</b>	<b>1 082</b>	<b>206 673</b>	<b>901</b>	<b>670 680</b>	<b>51</b>	<b>17 433</b>
<b>Overseas</b>	<b>171 937</b>	<b>183 981</b>	<b>25 503</b>	<b>159</b>	<b>125 389</b>	<b>672</b>	<b>151 723</b>	<b>823</b>	<b>30 986</b>	<b>46</b>	<b>403</b>
<b>Europe</b>	<b>104 447</b>	<b>114 837</b>	<b>18 228</b>	<b>111</b>	<b>73 116</b>	<b>350</b>	<b>91 805</b>	<b>340</b>	<b>22 514</b>	<b>33</b>	<b>145</b>
Austria	1 379	1 463	211	-	1 038	6	1 255	1	205	-	2
Belgium	3 021	3 358	420	6	2 037	11	2 474	1	878	-	5
Denmark	1 306	1 290	144	2	926	3	1 075	11	201	1	2
France	11 155	12 328	1 366	17	8 074	64	9 521	8	2 788	3	8
Germany	13 510	14 581	2 427	4	9 468	41	11 940	12	2 591	5	33
Ireland	2 963	2 898	615	6	1 605	17	2 243	1	649	-	5
Italy	10 494	12 762	1 729	7	8 538	17	10 291	12	2 440	1	18
Norway	847	981	230	-	655	4	889	3	88	-	1
Portugal	2 742	3 407	125	24	1 766	12	1 927	3	1 474	-	3
Spain	5 487	5 507	631	5	3 851	11	4 498	4	1 002	-	3
Sweden	1 457	1 322	236	-	888	1	1 125	-	194	-	3
Switzerland	1 914	2 010	249	1	1 364	8	1 622	-	388	-	-
The Netherlands	9 019	10 581	1 788	3	5 134	11	6 936	9	3 625	-	11
UK	33 562	35 977	6 961	35	23 566	116	30 678	92	5 162	2	43
Other	5 591	6 372	1 096	1	4 206	28	5 331	183	829	21	8
<b>North America</b>	<b>29 861</b>	<b>29 127</b>	<b>2 948</b>	<b>11</b>	<b>22 612</b>	<b>204</b>	<b>25 775</b>	<b>14</b>	<b>3 299</b>	<b>-</b>	<b>39</b>
Canada	4 012	3 892	415	-	2 899	17	3 331	-	559	-	2
USA	25 845	25 232	2 533	11	19 711	187	22 442	14	2 739	-	37
Other	4	3	-	-	2	-	2	-	1	-	-
<b>Central and South America</b>	<b>4 829</b>	<b>4 852</b>	<b>373</b>	<b>10</b>	<b>3 769</b>	<b>16</b>	<b>4 168</b>	<b>14</b>	<b>664</b>	<b>-</b>	<b>6</b>
Argentina	803	677	200	4	445	-	649	2	26	-	-
Brazil	2 439	2 687	37	2	2 256	9	2 304	9	371	-	3
Mexico	291	238	29	-	186	4	219	-	19	-	-
Other	1 296	1 250	107	4	882	3	996	3	248	-	3
<b>Australasia</b>	<b>10 584</b>	<b>9 545</b>	<b>526</b>	<b>14</b>	<b>8 021</b>	<b>36</b>	<b>8 597</b>	<b>8</b>	<b>936</b>	<b>1</b>	<b>3</b>
Australia	8 722	7 529	396	14	6 373	28	6 811	5	709	1	3

**Table C. Number of foreign arrivals by country and mode of travel (continued)**

Country	August		Mode of travel (August 2009)									
	2008	2009	Air					Rail	Road	Sea	Unspecified	
			Cape Town	Durban	OR Tambo	Other	Total					
New Zealand	1 779	1 944	122	-	1 608	7	1 737	2	205	-	-	
Other	83	72	8	-	40	1	49	1	22	-	-	
<b>Middle East</b>	<b>4 159</b>	<b>3 780</b>	<b>441</b>	<b>1</b>	<b>2 992</b>	<b>15</b>	<b>3 449</b>	<b>14</b>	<b>308</b>	-	<b>9</b>	
Iran	358	392	30	-	339	8	377	3	12	-	-	
Israel	1 584	1 829	45	-	1 581	3	1 629	2	196	-	2	
Saudi Arabia	1 118	653	201	-	434	-	635	1	15	-	2	
Other	1 099	906	165	1	638	4	808	8	85	-	5	
<b>Asia</b>	<b>18 057</b>	<b>21 840</b>	<b>2 987</b>	<b>12</b>	<b>14 879</b>	<b>51</b>	<b>17 929</b>	<b>433</b>	<b>3 265</b>	<b>12</b>	<b>201</b>	
China	2 224	3 872	418	2	2 948	2	3 370	73	347	-	82	
Hong Kong	493	919	69	-	837	-	906	-	13	-	-	
India	4 827	5 641	1 189	1	3 313	5	4 508	70	1 014	3	46	
Japan	2 641	2 823	202	2	2 370	9	2 583	23	209	-	8	
Korea	2 258	1 885	209	-	1 456	1	1 666	6	210	-	3	
Pakistan	770	1 090	52	5	562	5	624	12	442	-	12	
Philippines	628	839	142	-	482	3	627	81	114	7	10	
Taiwan	836	1 163	238	2	486	15	741	50	344	-	28	
Thailand	901	891	72	-	782	-	854	4	33	-	-	
Other	2 479	2 717	396	-	1 643	11	2 050	114	539	2	12	
<b>Africa</b>	<b>575 104</b>	<b>702 498</b>	<b>1 842</b>	<b>251</b>	<b>48 326</b>	<b>393</b>	<b>50 812</b>	<b>77</b>	<b>637 509</b>	<b>5</b>	<b>14 095</b>	
<b>SADC</b>	<b>561 538</b>	<b>686 853</b>	<b>1 684</b>	<b>248</b>	<b>35 576</b>	<b>282</b>	<b>37 790</b>	<b>34</b>	<b>634 994</b>	<b>5</b>	<b>14 030</b>	
Angola	2 972	3 096	115	-	2 696	34	2 845	3	241	-	7	
Botswana	59 994	72 169	3	13	2 693	65	2 774	-	69 275	-	120	
DRC	3 133	3 522	2	-	2 768	5	2 775	-	738	-	9	
Lesotho	163 531	167 708	1	-	656	-	657	-	153 762	-	13 289	
Madagascar	318	250	1	-	222	1	224	1	24	-	1	
Malawi	14 252	15 966	6	-	2 511	2	2 519	-	13 436	-	11	
Mauritius	1 254	1 223	113	92	794	-	999	-	215	-	9	
Mozambique	80 578	114 797	77	97	2 780	28	2 982	1	111 730	-	84	
Namibia	18 951	19 217	1 282	2	2 715	24	4 023	20	15 135	-	39	
Swaziland	95 743	104 111	4	33	852	36	925	1	103 051	-	134	

**Table C. Number of foreign arrivals by country and mode of travel (continued)**

Country	August		Mode of travel (August 2009)								
	2008	2009	Air					Rail	Road	Sea	Unspecified
			Cape Town	Durban	OR Tambo	Other	Total				
Tanzania	1 202	1 313	10	3	877	1	891	-	421	-	1
Zambia	14 838	14 255	6	4	4 681	32	4 723	-	9 522	-	10
Zimbabwe	104 772	169 226	64	4	11 331	54	11 453	8	157 444	5	316
<b>East and Central Africa</b>	<b>6 174</b>	<b>7 563</b>	<b>46</b>	<b>-</b>	<b>5 953</b>	<b>59</b>	<b>6 058</b>	<b>3</b>	<b>1 470</b>	<b>-</b>	<b>32</b>
Burundi	70	115	-	-	92	1	93	-	22	-	-
Cameroon	406	551	6	-	486	1	493	-	58	-	-
Central African Republic	4	17	-	-	15	-	15	-	2	-	-
Chad	26	33	-	-	32	-	32	-	1	-	-
Comoros	8	27	-	-	24	2	26	-	1	-	-
Congo	412	605	15	-	418	6	439	-	164	-	2
Djibouti	5	5	-	-	3	-	3	-	2	-	-
Equat Guinea	16	52	-	-	16	20	36	-	16	-	-
Eritrea	50	54	2	-	43	-	45	2	7	-	-
Ethiopia	836	781	3	-	555	-	558	-	214	-	9
Gabon	673	677	2	-	659	2	663	-	14	-	-
Kenya	2 211	2 730	6	-	2 259	20	2 285	-	436	-	9
Reunion	65	26	-	-	26	-	26	-	-	-	-
Rwanda	256	303	2	-	275	4	281	-	21	-	1
Sao Tome and Principe	11	17	1	-	16	-	17	-	-	-	-
Seychelles	226	197	-	-	192	1	193	-	2	-	2
Somalia	56	211	2	-	9	-	11	-	200	-	-
Uganda	843	1 162	7	-	833	2	842	1	310	-	9
<b>West Africa</b>	<b>6 308</b>	<b>7 062</b>	<b>56</b>	<b>-</b>	<b>5 995</b>	<b>34</b>	<b>6 085</b>	<b>39</b>	<b>919</b>	<b>-</b>	<b>19</b>
Benin	114	128	-	-	98	1	99	-	28	-	1
Burkina Faso	53	62	-	-	57	-	57	-	5	-	-
Cape Verde Island	66	59	4	-	36	2	42	-	17	-	-
Cote D'Ivoire	195	235	-	-	221	-	221	-	14	-	-
Gambia	45	68	-	-	61	-	61	-	7	-	-

**Table C. Number of foreign arrivals by country and mode of travel (concluded)**

Country	August		Mode of travel (August 2009)								
	2008	2009	Air					Rail	Road	Sea	Unspecified
			Cape Town	Durban	OR Tambo	Other	Total				
Ghana	1 162	1 172	5	-	958	1	964	35	169	-	4
Guinea	123	147	1	-	76	4	81	-	66	-	-
Guinea-Bissau	24	23	-	-	14	-	14	-	9	-	-
Liberia	27	43	-	-	35	-	35	-	8	-	-
Madeira Islands	6	9	2	-	3	-	5	-	4	-	-
Mali	64	103	3	-	77	-	80	-	22	-	1
Mauritania	10	15	-	-	14	-	14	-	-	-	1
Niger	13	25	-	-	22	-	22	-	3	-	-
Nigeria	4 018	4 542	36	-	3 961	26	4 023	2	507	-	10
Saint Helena	16	21	2	-	3	-	5	2	14	-	-
Senegal	257	281	3	-	266	-	269	-	11	-	1
Sierra Leone	71	74	-	-	52	-	52	-	21	-	1
Togo	41	55	-	-	41	-	41	-	14	-	-
<b>North Africa</b>	<b>1 084</b>	<b>1 020</b>	<b>56</b>	<b>3</b>	<b>802</b>	<b>18</b>	<b>879</b>	<b>1</b>	<b>126</b>	<b>-</b>	<b>14</b>
Algeria	176	101	4	1	75	11	91	-	10	-	-
Egypt	347	408	13	-	356	-	369	-	39	-	-
Libya	101	105	3	2	41	7	53	-	41	-	11
Morocco	106	118	9	-	97	-	106	-	12	-	-
The Sudan	248	165	21	-	123	-	144	-	18	-	3
Tunisia	106	121	6	-	108	-	114	1	6	-	-
Western Sahara	-	2	-	-	2	-	2	-	-	-	-
<b>Unspecified</b>	<b>5 901</b>	<b>9 259</b>	<b>229</b>	<b>3</b>	<b>3 889</b>	<b>17</b>	<b>4 138</b>	<b>1</b>	<b>2 185</b>	<b>-</b>	<b>2 935</b>

**Table D. Number of foreign arrivals by region and purpose of visit**

Country	Purpose of visit (August 2009)							Border traffic
	Grand Total	Business	Holiday	Study	Work	Transit	Unspecified	
<b>Grand Total</b>	<b>895 738</b>	<b>9 519</b>	<b>843 929</b>	<b>7 405</b>	<b>14 863</b>	<b>2 859</b>	<b>1</b>	<b>17 162</b>
<b>Overseas</b>	<b>183 981</b>	<b>3 519</b>	<b>170 433</b>	<b>1 069</b>	<b>7 616</b>	<b>1 056</b>	-	<b>288</b>
Europe	114 837	1 723	108 477	633	3 378	552	-	74
North America	29 127	487	27 632	169	625	188	-	26
Central and South America	4 852	76	4 445	37	198	93	-	3
Australasia	9 545	134	9 206	10	149	44	-	2
Middle East	3 780	126	3 514	24	99	11	-	6
Asia	21 840	973	17 159	196	3 167	168	-	177
<b>Africa</b>	<b>702 498</b>	<b>5 923</b>	<b>670 953</b>	<b>5 268</b>	<b>4 615</b>	<b>1 800</b>	-	<b>13 939</b>
SADC	686 853	5 381	657 559	4 640	3 686	1 699	-	13 888
East and Central Africa	7 563	280	6 401	394	411	53	-	24
West Africa	7 062	194	6 205	174	431	44	-	14
North Africa	1 020	68	788	60	87	4	-	13
<b>Unspecified</b>	<b>9 259</b>	<b>77</b>	<b>2 543</b>	<b>1 068</b>	<b>2 632</b>	<b>3</b>	<b>1</b>	<b>2 935</b>

**Table E. Number of foreign arrivals by country and purpose of visit**

Country	August		Purpose of visit (August 2009)							Border traffic
	2008	2009	Business	Holiday	Study	Work	Transit	Unspecified	Total	
<b>Grand Total</b>	<b>752 942</b>	<b>895 738</b>	<b>9 519</b>	<b>843 929</b>	<b>7 405</b>	<b>14 863</b>	<b>2 859</b>	<b>1</b>	<b>878 576</b>	<b>17 162</b>
<b>Overseas</b>	<b>171 937</b>	<b>183 981</b>	<b>3 519</b>	<b>170 433</b>	<b>1 069</b>	<b>7 616</b>	<b>1 056</b>	<b>-</b>	<b>183 693</b>	<b>288</b>
<b>Europe</b>	<b>104 447</b>	<b>114 837</b>	<b>1 723</b>	<b>108 477</b>	<b>633</b>	<b>3 378</b>	<b>552</b>	<b>-</b>	<b>114 763</b>	<b>74</b>
Austria	1 379	1 463	22	1 396	3	37	3	-	1 461	2
Belgium	3 021	3 358	49	3 194	16	81	15	-	3 355	3
Denmark	1 306	1 290	30	1 182	12	58	6	-	1 288	2
France	11 155	12 328	133	11 516	147	452	78	-	12 326	2
Germany	13 510	14 581	295	13 628	107	500	38	-	14 568	13
Ireland	2 963	2 898	35	2 782	12	55	11	-	2 895	3
Italy	10 494	12 762	66	12 521	10	101	62	-	12 760	2
Norway	847	981	25	897	15	36	7	-	980	1
Portugal	2 742	3 407	15	3 327	6	44	12	-	3 404	3
Spain	5 487	5 507	22	5 396	4	70	12	-	5 504	3
Sweden	1 457	1 322	42	1 152	33	86	6	-	1 319	3
Switzerland	1 914	2 010	48	1 883	17	53	9	-	2 010	-
The Netherlands	9 019	10 581	117	10 190	60	163	42	-	10 572	9
UK	33 562	35 977	673	34 180	145	766	189	-	35 953	24
Other	5 591	6 372	151	5 233	46	876	62	-	6 368	4
<b>North America</b>	<b>29 861</b>	<b>29 127</b>	<b>487</b>	<b>27 632</b>	<b>169</b>	<b>625</b>	<b>188</b>	<b>-</b>	<b>29 101</b>	<b>26</b>
Canada	4 012	3 892	69	3 675	25	102	19	-	3 890	2
USA	25 845	25 232	418	23 954	144	523	169	-	25 208	24
Other	4	3	-	3	-	-	-	-	3	-
<b>Central and South America</b>	<b>4 829</b>	<b>4 852</b>	<b>76</b>	<b>4 445</b>	<b>37</b>	<b>198</b>	<b>93</b>	<b>-</b>	<b>4 849</b>	<b>3</b>
Argentina	803	677	19	627	2	12	17	-	677	-
Brazil	2 439	2 687	29	2 524	16	66	51	-	2 686	1
Mexico	291	238	11	204	2	21	-	-	238	-
Other	1 296	1 250	17	1 090	17	99	25	-	1 248	2
<b>Australasia</b>	<b>10 584</b>	<b>9 545</b>	<b>134</b>	<b>9 206</b>	<b>10</b>	<b>149</b>	<b>44</b>	<b>-</b>	<b>9 543</b>	<b>2</b>
Australia	8 722	7 529	112	7 260	9	113	33	-	7 527	2

**Table E. Number of foreign arrivals by country and purpose of visit (continued)**

Country	August		Purpose of visit (August 2009)							Border traffic
	2008	2009	Business	Holiday	Study	Work	Transit	Unspecified	Total	
New Zealand	1 779	1 944	20	1 883	1	29	11	-	1 944	-
Other	83	72	2	63		7		-	72	-
<b>Middle East</b>	<b>4 159</b>	<b>3 780</b>	<b>126</b>	<b>3 514</b>	<b>24</b>	<b>99</b>	<b>11</b>	<b>-</b>	<b>3 774</b>	<b>6</b>
Iran	358	392	34	336	8	14	-	-	392	-
Israel	1 584	1 829	37	1 745	6	36	4	-	1 828	1
Saudi Arabia	1 118	653	5	641	1	5	1	-	653	-
Other	1 099	906	50	792	9	44	6	-	901	5
<b>Asia</b>	<b>18 057</b>	<b>21 840</b>	<b>973</b>	<b>17 159</b>	<b>196</b>	<b>3 167</b>	<b>168</b>	<b>-</b>	<b>21 663</b>	<b>177</b>
China	2 224	3 872	152	2 861	42	730	14	-	3 799	73
Hong Kong	493	919	2	911	-	4	2	-	919	-
India	4 827	5 641	560	4 218	47	734	41	-	5 600	41
Japan	2 641	2 823	32	2 608	10	157	14	-	2 821	2
Korea	2 258	1 885	24	1 740	41	67	13	-	1 885	-
Pakistan	770	1 090	44	911	8	106	10	-	1 079	11
Philippines	628	839	23	313	2	455	36	-	829	10
Taiwan	836	1 163	23	832	12	256	12	-	1 135	28
Thailand	901	891	12	590	3	284	2	-	891	-
Other	2 479	2 717	101	2 175	31	374	24	-	2 705	12
<b>Africa</b>	<b>575 104</b>	<b>702 498</b>	<b>5 923</b>	<b>670 953</b>	<b>5 268</b>	<b>4 615</b>	<b>1 800</b>	<b>-</b>	<b>688 559</b>	<b>13 939</b>
<b>SADC</b>	<b>561 538</b>	<b>686 853</b>	<b>5 381</b>	<b>657 559</b>	<b>4 640</b>	<b>3 686</b>	<b>1 699</b>	<b>-</b>	<b>672 965</b>	<b>13 888</b>
Angola	2 972	3 096	53	2 746	165	79	53	-	3 096	-
Botswana	59 994	72 169	80	70 233	1 389	231	150	-	72 083	86
DRC	3 133	3 522	73	3 214	116	87	32	-	3 522	-
Lesotho	163 531	167 708	70	153 029	464	168	736	-	154 467	13 241
Madagascar	318	250	7	208	13	12	10	-	250	-
Malawi	14 252	15 966	244	15 569	58	74	17	-	15 962	4
Mauritius	1 254	1 223	19	1 147	17	24	8	-	1 215	8
Mozambique	80 578	114 797	425	113 941	164	148	39	-	114 717	80
Namibia	18 951	19 217	1 769	16 700	396	69	265	-	19 199	18
Swaziland	95 743	104 111	505	102 013	1 070	300	90	-	103 978	133



**Table E. Number of foreign arrivals by country and purpose of visit (continued)**

Country	August		Purpose of visit (August 2009)						Border traffic	
	2008	2009	Business	Holiday	Study	Work	Transit	Unspecified		Total
Tanzania	1 202	1 313	72	1 159	42	37	2	-	1 312	1
Zambia	14 838	14 255	942	13 053	118	98	36	-	14 247	8
Zimbabwe	104 772	169 226	1 122	164 547	628	2 359	261	-	168 917	309
<b>East and Central Africa</b>	<b>6 174</b>	<b>7 563</b>	<b>280</b>	<b>6 401</b>	<b>394</b>	<b>411</b>	<b>53</b>	-	<b>7 539</b>	<b>24</b>
Burundi	70	115	5	92	11	7	-	-	115	-
Cameroon	406	551	24	426	54	46	1	-	551	-
Central African Republic	4	17	6	9	2	-	-	-	17	-
Chad	26	33	3	25	2	3	-	-	33	-
Comoros	8	27	1	24	-	2	-	-	27	-
Congo	412	605	15	548	16	22	3	-	604	1
Djibouti	5	5	2	3	-	-	-	-	5	-
Equat Guinea	16	52	4	41	4	3	-	-	52	-
Eritrea	50	54	5	46	1	2	-	-	54	-
Ethiopia	836	781	19	694	20	41	3	-	777	4
Gabon	673	677	8	604	50	12	3	-	677	-
Kenya	2 211	2 730	133	2 250	134	184	21	-	2 722	8
Reunion	65	26	-	26	-	-	-	-	26	-
Rwanda	256	303	6	224	48	23	2	-	303	-
Sao Tome and Principe	11	17	2	13	1	1	-	-	17	-
Seychelles	226	197	3	189	-	3	-	-	195	2
Somalia	56	211	-	210	-	1	-	-	211	-
Uganda	843	1 162	44	977	51	61	20	-	1 153	9
<b>West Africa</b>	<b>6 308</b>	<b>7 062</b>	<b>194</b>	<b>6 205</b>	<b>174</b>	<b>431</b>	<b>44</b>	-	<b>7 048</b>	<b>14</b>
Benin	114	128	2	118	1	7	-	-	128	-
Burkina Faso	53	62	8	39	3	12	-	-	62	-
Cape Verde Island	66	59	2	54	-	2	1	-	59	-
Cote D'Ivoire	195	235	15	182	11	26	1	-	235	-
Gambia	45	68	9	54	-	2	3	-	68	-

**Table E. Number of foreign arrivals by country and purpose of visit (concluded)**

Country	August		Purpose of visit							Border traffic
	2008	2009	Business	Holiday	Study	Work	Transit	Unspecified	Total	
Ghana	1 162	1 172	19	1 017	21	106	5	-	1 168	4
Guinea	123	147	3	131	3	9	1	-	147	-
Guinea-Bissau	24	23	1	18	1	2	1	-	23	-
Liberia	27	43	4	35	1	3	-	-	43	-
Madeira Islands	6	9	-	9	-	-	-	-	9	-
Mali	64	103	10	74	11	5	2	-	102	1
Mauritania	10	15	-	14	1	-	-	-	15	-
Niger	13	25	4	20	1	-	-	-	25	-
Nigeria	4 018	4 542	90	4 103	112	220	9	-	4 534	8
Saint Helena	16	21	-	21	-	-	-	-	21	-
Senegal	257	281	21	207	7	27	19	-	281	-
Sierra Leone	71	74	3	63	-	5	2	-	73	1
Togo	41	55	3	46	1	5	-	-	55	-
<b>North Africa</b>	<b>1 084</b>	<b>1 020</b>	<b>68</b>	<b>788</b>	<b>60</b>	<b>87</b>	<b>4</b>	<b>-</b>	<b>1 007</b>	<b>13</b>
Algeria	176	101	3	85	1	12	-	-	101	-
Egypt	347	408	32	323	18	34	1	-	408	-
Libya	101	105	2	81	5	5	1	-	94	11
Morocco	106	118	10	88	11	9	-	-	118	-
The Sudan	248	165	11	119	22	9	2	-	163	2
Tunisia	106	121	10	91	3	17	-	-	121	-
Western Sahara	-	2	-	1	-	1	-	-	2	-
<b>Unspecified</b>	<b>5 901</b>	<b>9 259</b>	<b>77</b>	<b>2 543</b>	<b>1 068</b>	<b>2 632</b>	<b>3</b>	<b>1</b>	<b>6 324</b>	<b>2 935</b>