



**Statistics
South Africa**

Preferred supplier of quality statistics



Statistical release

P0351

Tourism and Migration

February 2009

**Embargoed until:
8 June 2009
14:30**

Enquiries:

User Information Services
Tel.: (012) 310 8600 / 4892 / 8390

Forthcoming issue:

March 2009

Expected release date

29 June 2009

Statistics South Africa • Mbalo-mbalo dza Afrika Tshipembe • Tinhlayo-tiko ta Afrika-Dzonga • Dipalopalo tsa Aforika Borwa • Ezezibalo zaseNingizimu Afrika
Dipalopalo tša Afrika Borwa • Dipalopalo tsa Afrika Borwa • Ubalo lwaseMzantsi Afrika • Telubalo eNingizimu Afrika • iNanimbalo leSewula Afrika • Statistiek Suid-Afrika

email: info@statssa.gov.za
www.statssa.gov.za

170 Andries Street • Private Bag X44, 0001 Pretoria, South Africa
Tel: +27(12) 310 8911, Fax: +27(12) 321 7381

NOTICE

Statistics South Africa (Stats SA) has completed its Duration of Stay exercise as part of improving its information on foreign travellers and measurement of foreign tourists. As a result of this exercise, it is now possible to remove SAME-DAY visitors and OVERNIGHT visitors (tourists) from the foreign arrivals data it receives from the Department of Home Affairs. That is based on the date on which the arrivals that entered the country for purposes other than work left. Stats SA started publishing information on TOURISTS as defined by United Nations World Tourism Organisation with the January 2009 data. In this month’s release, additional data (graphs and tables) are provided in the APPENDIX for the benefit of users who would like to continue using foreign arrivals (rather than tourists) as the base denominator for comparison and trend analysis purposes.

Contents

	Page
KEY FINDINGS	
1. Number of travellers	2
2. Mode of travellers	2
3. Sex and age distribution of tourists.....	2
4. Regional and national distribution of tourists.....	2
5. Purpose of travel of tourists.....	3
Figures	
1. Number of tourists from eight leading overseas countries in February 2009.....	4
2. Number of tourists from eight leading SADC countries in February 2009.....	4
3. Number of tourists from eight leading ‘other’ African countries in February 2009.....	5
Tables	
1. Number of South African residents and foreign travellers by travel direction	6
2. Number of South African residents and foreign travellers by travel direction and mode of travel	6
3. Number of tourists from overseas, SADC and ‘other’ African regions by sex and age group	7
4. Number of tourists by country of residence and mode of travel.....	8
5. Number of tourists by country of residence and purpose of travel	12
EXPLANATORY NOTES	
NOTICE	16
1. Introduction	16
2. Purpose of the statistical release	16
3. Scope and coverage.....	16
4. Data	17
5. Limitations	17
6. Glossary of terms	17
7. Symbols and abbreviations used	17
GENERAL INFORMATION	18
APPENDIX	19

KEY FINDINGS

1. Number of travellers

The February 2009 data collected by the Department of Home Affairs' (DHA) immigration officers at the ports of entry into South Africa show that a total of 1 915 276 travellers (arrivals and departures) passed through the ports of entry. As presented in Table 1, these travellers are made up of 524 111 South African residents and 1 391 165 foreign travellers. A further breakdown of the figures indicates that 260 753 and 263 358 South African resident arrivals and departures respectively were recorded. The corresponding volumes for foreign arrivals and departures were 756 524 and 634 641 respectively. A comparison between the movements in January 2009 and February 2009 as well as movements in February 2008 and February 2009 indicate that there was a decline in all movements. For example, there was a decline of 2,9% for foreign arrivals from 779 094 in February 2008 to 756 524 in February 2009. The data on travellers received from the DHA do not provide detailed information on departures. Similarly, data on South African residents are limited. Information on the purpose of travel and the number of days South African travellers intend spending or spent abroad is not collected by South Africa immigration officers. Hence, it is not possible to categorise them as tourists and non tourists. However, data are available on foreign arrivals for this categorisation. In February 2009, there were 181 349 same-day visitors and 484 275 overnight visitors (tourists) among the foreign arrivals. The volume of same-day visitors and that of tourists between January and February was down by 14,9% and 20,3% respectively. (see Table 1).

2. Mode of travel of travellers

Travellers who cross South Africa's borders rarely use trains and ships since they are mainly used for transporting goods. Data presented in Table 2 show that in February 2009, road transport was the most common mode of travel used by 1 298 732 (67,8%) out of the 1 915 276 travellers. The number of travellers who used air transport was 598 160 (31,2%). The arrival data on South African residents show that 96 153 (36,9%) came by air and 163 106 (62,6%) by road. For their departure, 101 354 (38,5%) and 161 885 (61,5%) used air and road transport respectively. In the case of foreign travellers, 209 326 (27,7%) arrived by air. Those who came by road were 530 657 (70,1%). When departing South Africa, 191 327 (30,1%) foreign travellers left by air whilst 443 084 (69,8%) left by road.

As shown in Table 2 an overwhelming majority 169 273 (93,3%) of same-day visitors arrived in the country by road. Only 12 066 (6,7%) same-day visitors flew into the country. However, data on overnight visitors (tourists) show that, 299 550 (61,9%) used road transport whereas 184 467 (38,1%) came by air. The country of residence of tourists is used to categorise them into their respective regions and countries. Information on the specific region and country of residence of the tourists and the mode of travel used to enter South Africa is provided in Table 4. In February 2009, a significantly high proportion of overseas tourists arrived in the country by air 150 711 (92,6%) compared to those who came in by road 11 772 (7,2%). This is in contrast to tourists from SADC countries who came into South Africa predominantly by road 285 233 (92,5%) compared to air 23 058 (7,5%). A relatively high proportion 9 734 (87,2%) of tourists from 'other' African countries flew into the country but 1 429 (12,8%) used road transport.

3. Sex and age distribution of tourists

According to Table 3 in February 2009, there were 272 754 (56,3%) male and 210 839 (43,5%) female tourists. The overseas tourists were made up of 91 404 (56,2%) male tourists and 71 119 (43,8%) female tourists. Tourists from 'other' African countries had a significant proportion (67,6%) of males compared to that of SADC (56,0%). The proportions of female tourists from 'other' African countries and SADC countries were 32,4% and 43,8% respectively.

The age of the tourists were categorised into three broad groups namely, those younger than 15 years, those aged 15 up to 64 years, and persons 65 years and older. As presented in Table 3, a significant proportion 90,0% of the February 2009 tourists was aged 15-64 years. There were very few tourists younger than 15 years (4,1%) and those aged 65 years and older (5,9%). Taking the country of residence into consideration, the data show relatively high proportions of overseas tourists for both males (12,2%) and females (13,2%) who were older persons (i.e. 65 years and older). This is in contrast to tourists from SADC countries which comprised of 1,9% males and 3,1% females and tourists from 'other' African countries which were made up of 1,3% males and 1,7% females aged 65 years and older.

4. Regional and national distribution of tourists

In February 2009, overseas tourists came mainly from Europe 120 371 (74,0%); followed by North America 17 935 (11,0%); Asia 11 206 (6,9%); Australasia 6 829 (4,2%); Central and South America 3 900 (2,4%); and Middle East 2 473 (1,5%). Virtually all tourists from Africa came from the SADC countries, 308 312 (96,5%). The distribution of

the remaining tourists from Africa is as follows: East and Central Africa 5 450 (1,7%); West Africa 4 818 (1,5%) and North Africa 899 (0,3%).

Data presented in Figure 1 indicate that UK, 46 910 (28,8%); Germany, 20 494 (12,6%); USA, 14 034 (8,6%); France, 9 997 (6,1%); The Netherlands, 9 470 (5,8%); Australia, 5 616 (3,5%); Sweden, 4 640 (2,9%); and Canada, 3 898 (2,4%) were the eight leading overseas source countries. Tourists from these eight countries constitute 70,7% of all tourists from overseas countries.

The eight leading source countries from SADC were Mozambique, 72 384 (23,5%); Lesotho, 63 715 (20,7%); Zimbabwe, 63 020 (20,4%); Swaziland, 41 592 (13,5%); Botswana, 27 185 (8,8%); Zambia, 11 281 (3,7%); Malawi, 10 731 (3,5%) and Namibia, 10 383 (3,4%) as shown in Figure 2. Tourists from these eight countries constitute 97,5% of all tourists from SADC countries.

The eight leading source countries from 'other' African countries, shown in Figure 3, are Nigeria, 3 098 (27,7%); Kenya, 1 673 (15,0%); Ghana, 852 (7,6%); Ethiopia, 821 (7,4%); Uganda, 807 (7,2%); Congo, 538 (4,8%); Gabon, 406 (3,6%) and Egypt 360 (3,2%). Tourists from these eight countries constitute 76,5% of all tourists from 'other' African countries.

5. Purpose of travel of tourists

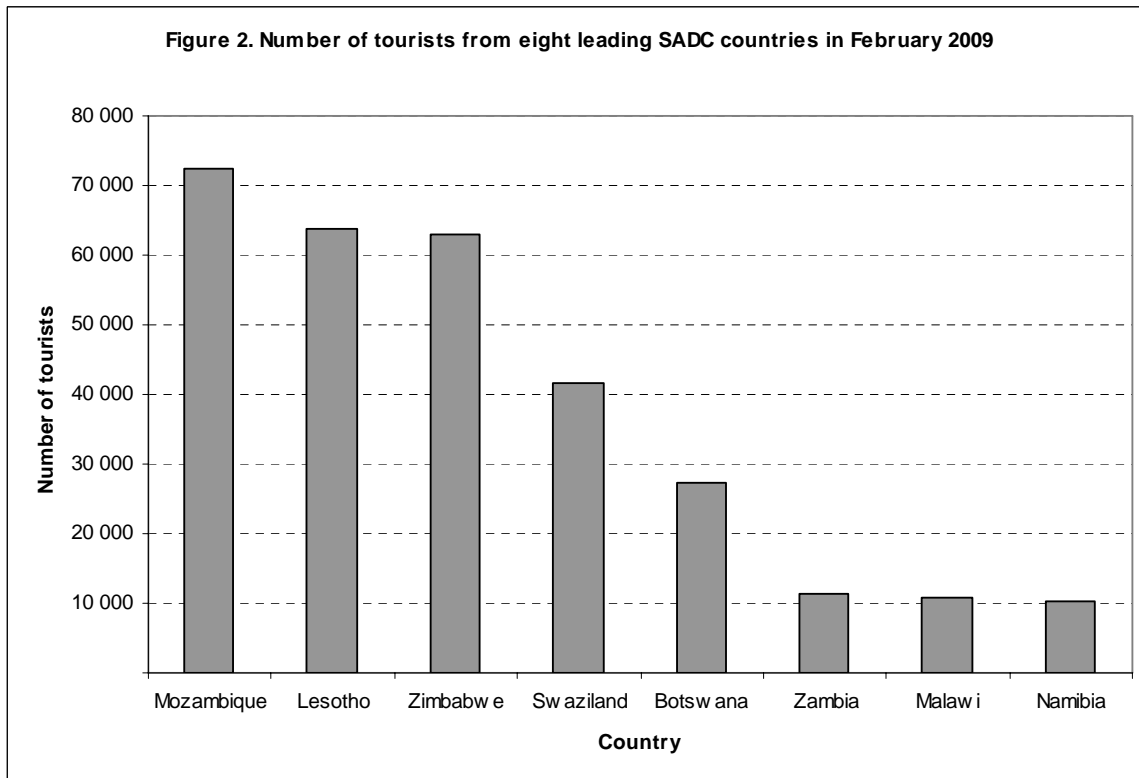
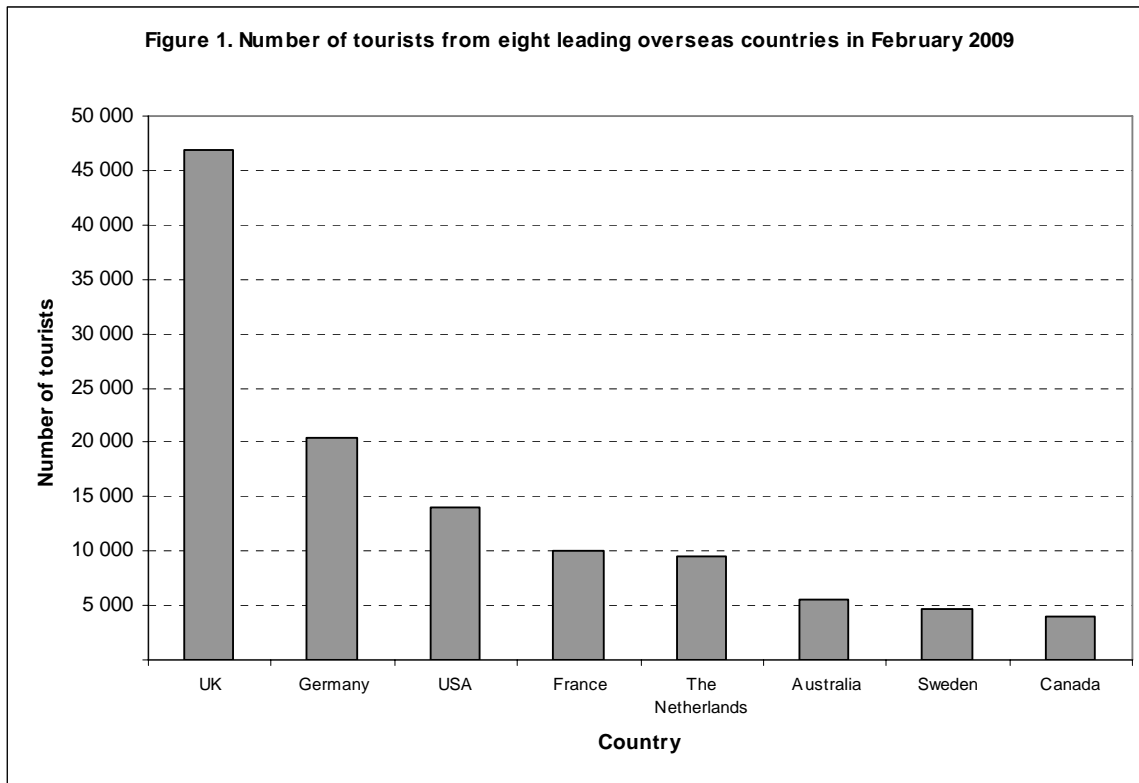
As observed from data given in Table 5, in February 2009, an overwhelming majority (96,6%) of tourists was in South Africa for holiday. This is a large difference compared to those who have come to study (1,5%) and those on business (1,9%).

A detailed analysis reveals that all the overseas regions had at least 89,0% of their tourists coming to South Africa for holidays. Tourists from Australasia (97,8%), Europe (97,4%), Central and South America (97,8%), North America (96,5%), Asia (89,6%) and the Middle East (92,8%) were in South Africa for holidays. Tourists from Middle East and Asia were more diverse in their purpose. Middle East and Asia had 5,9% and 8,0% respectively of their tourists in South Africa for business. Furthermore, students made up 1,3% and 2,3% of Middle East and Asia tourists respectively.

Although the majority (96,8%) of African tourists came to South Africa for holiday, there is a significant difference between tourists from SADC countries and those from 'other' African countries, namely:

- Whereas 97,2% of tourists from the SADC countries were on holiday; 86,2% of tourists from 'other' African countries were on holiday. Proportionally, the lowest percentage (80,9%) of tourists on holiday came from North Africa, a region where, a large percentage (13,6%) of tourists were on business.
- A relatively higher percentage of tourists from 'other' African countries than from SADC countries were here for business and studies.
- Overall, North Africa and East and Central Africa had 13,6% and 4,8% respectively of their tourists in South Africa for business compared to only 1,3% of business persons among the tourists from SADC countries.
- Similarly, 12,1%; 5,6% and 4,8% of tourists from East and Central Africa; North Africa and West Africa respectively were students compared to only 1,5% among tourists from SADC countries.

PJ Lehohla
Statistician-General



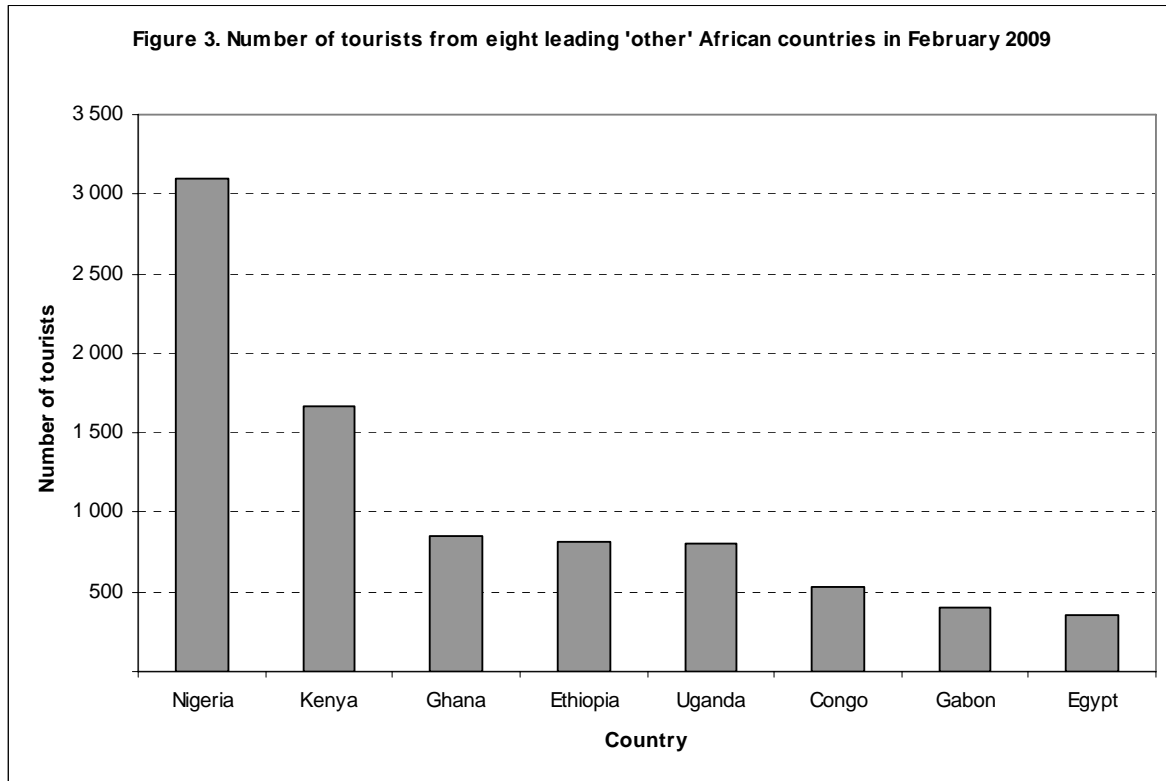


Table 1. Number of South African residents and foreign travellers by travel direction

Travel direction	February	January	February	% change	% change
	2008	2009	2009	Feb 08 – Feb 09	Jan 09 – Feb 09
Grand Total	1 992 597	2 447 857	1 915 276	-3,9	-21,8
South African residents	558 154	803 207	524 111	-6,1	-34,7
Arrivals	276 096	482 126	260 753	-5,6	-45,9
Departures	282 058	321 081	263 358	-6,6	-18,0
Foreign travellers	1 434 443	1 644 650	1 391 165	-3,0	-15,4
Arrivals	779 094	920 338	756 524	-2,9	-17,8
Departures	655 349	724 312	634 641	-3,2	-12,4
Visitors		820 840	665 624		-18,9
Same day		213 032	181 349		-14,9
Overnight (Tourists)		607 808	484 275		-20,3

Table 2. Number of South African residents and foreign travellers by travel direction and mode of travel

Travel direction	Total	Mode of travel (February 2009)								
		Air					Rail	Road	Sea	Unspec.
		Cape Town	Durban	OR Tambo	Other	Total				
Grand Total	1 915 276	143 889	2 027	445 446	6 798	598 160	78	1 298 732	393	17 913
South African residents	524 111	26 542	1 514	164 523	4 928	197 507	4	324 991	112	1 497
Arrivals	260 753	13 422	699	79 573	2 459	96 153	2	163 106	35	1 457
Departures	263 358	13 120	815	84 950	2 469	101 354	2	161 885	77	40
Foreign travellers	1 391 165	117 347	513	280 923	1 870	400 653	74	973 741	281	16 416
Arrivals	756 524	61 097	272	146 937	1 020	209 326	67	530 657	141	16 333
Departures	634 641	56 250	241	133 986	850	191 327	7	443 084	140	83
Visitors	665 624	59 937	238	135 554	804	196 533	41	468 823	45	182
Same day	181 349	628	10	11 231	197	12 066	2	169 273	8	-
Overnight (Tourists)	484 275	59 309	228	124 323	607	184 467	39	299 550	37	182

Table 3. Number of tourists from overseas, SADC and 'other' African regions by sex and age groups

Sex	Age group	Total	Region			
			Overseas	SADC	'other' African	Unspecified
All	Total	484 275	162 714	308 312	11 167	2 082
	<15	19 825	9 331	10 007	417	70
	15-64	435 749	132 730	290 454	10 594	1 971
	65+	28 410	20 598	7 616	156	40
	Unspecified	291	55	235	-	1
Males	Total	272 754	91 404	172 662	7 547	1 141
	<15	10 029	4 815	4 965	215	34
	15-64	247 979	75 407	164 250	7 237	1 085
	65+	14 596	11 155	3 324	95	22
	Unspecified	150	27	123	-	-
Females	Total	210 839	71 119	135 167	3 617	936
	<15	9 796	4 516	5 042	202	36
	15-64	187 212	57 186	125 790	3 355	881
	65+	13 730	9 395	4 257	60	18
	Unspecified	101	22	78	-	1
Unspecified	Total	682	191	483	3	5
	<15	-	-	-	-	-
	15-64	558	137	414	2	5
	65+	84	48	35	1	-
	Unspecified	40	6	34	-	-

Table 4. Number of tourists by country of residence and mode of travel

Country	Mode of travel (February 2009)									
	Grand Total	Air					Rail	Road	Sea	Unspecified
		Cape Town	Durban	OR Tambo	Other	TOTAL				
Grand Total	484 275	59 309	228	124 323	607	184 467	39	299 550	37	182
Overseas	162 714	57 500	52	92 788	371	150 711	14	11 772	35	182
Europe	120 371	50 210	34	61 248	209	111 701	2	8 462	28	178
Austria	1 890	793	-	964	6	1 763	-	127	-	-
Belgium	2 934	1 072	-	1 549	16	2 637	-	297	-	-
Denmark	2 839	662	-	1 885	-	2 547	-	290	2	-
Finland	1 307	540	-	669	2	1 211	-	96	-	-
France	9 997	2 279	4	6 879	14	9 176	-	821	-	-
Germany	20 494	8 829	2	10 087	43	18 961	2	1 528	3	-
Ireland	2 955	1 474	4	1 303	5	2 786	-	169	-	-
Italy	2 999	954	1	1 831	5	2 791	-	208	-	-
Norway	2 483	1 093	-	1 203	1	2 297	-	186	-	-
Portugal	1 838	174	3	966	3	1 146	-	692	-	-
Sweden	4 640	2 222	-	2 074	3	4 299	-	341	-	-
Switzerland	3 016	1 072	2	1 737	8	2 819	-	195	2	-
The Netherlands	9 470	4 036	9	4 381	4	8 430	-	1 039	-	1
UK	46 910	23 016	9	21 624	92	44 741	-	1 973	19	177
Other	6 599	1 994	-	4 096	7	6 097	-	500	2	-
North America	17 935	4 095	5	12 393	74	16 567	-	1 361	7	-
Canada	3 898	1 094	-	2 483	24	3 601	-	292	5	-
USA	14 034	3 000	5	9 910	50	12 965	-	1 067	2	-
Other	3	1	-	-	-	1	-	2	-	-
Central and South America	3 900	734	2	2 852	5	3 593	-	307	-	-
Argentina	849	534	-	295	-	829	-	20	-	-
Brazil	2 045	38	2	1 829	4	1 873	-	172	-	-
Chile	318	62	-	230	-	292	-	26	-	-
Other	688	100	-	498	1	599	-	89	-	-
Australasia	6 829	629	5	5 787	42	6 463	-	362	-	4
Australia	5 616	492	5	4 816	40	5 353	-	260	-	3

Table 4. Number of tourists by country of residence and mode of travel (continued)

Country	Mode of travel (February 2009)									
	Grand Total	Air					Rail	Road	Sea	Unspecified
		Cape Town	Durban	OR Tambo	Other	TOTAL				
New Zealand	1 169	135	-	942	2	1 079	-	89	-	1
Other	44	2	-	29	-	31	-	13	-	-
Middle East	2 473	280	-	2 051	12	2 343	-	130	-	-
Israel	1 151	47	-	1 033	2	1 082	-	69	-	-
Lebanon	184	25	-	136	1	162	-	22	-	-
Saudi Arabia	438	66	-	353	7	426	-	12	-	-
Other	700	142	-	529	2	673	-	27	-	-
Asia	11 206	1 552	6	8 457	29	10 044	12	1 150	-	-
China	2 409	194	-	2 125	-	2 319	1	89	-	-
Hong Kong	361	55	-	289	-	344	-	17	-	-
India	2 645	340	2	1 913	4	2 259	7	379	-	-
Japan	1 227	164	-	1 010	5	1 179	-	48	-	-
Korea	1 055	130	-	842	12	984	-	71	-	-
Pakistan	757	46	3	491	1	541	3	213	-	-
Singapore	394	160	-	222	1	383	-	11	-	-
Taiwan	627	178	-	350	3	531	-	96	-	-
Thailand	374	81	-	287	-	368	-	6	-	-
Other	1 357	204	1	928	3	1 136	1	220	-	-
Africa	319 479	1 751	176	30 652	213	32 792	25	286 662	-	-
SADC	308 312	1 545	173	21 168	172	23 058	21	285 233	-	-
Angola	3 243	185	-	2 899	13	3 097	-	146	-	-
Botswana	27 185	16	10	1 365	51	1 442	-	25 743	-	-
DRC	2 313	1	-	1 675	9	1 685	-	628	-	-
Lesotho	63 715	4	-	271	28	303	-	63 412	-	-
Madagascar	252	-	-	245	-	245	-	7	-	-
Malawi	10 731	1	-	1 495	-	1 496	2	9 233	-	-
Mauritius	1 075	192	106	718	2	1 018	-	57	-	-
Mozambique	72 384	80	54	1 577	5	1 716	1	70 667	-	-
Namibia	10 383	1 002	-	1 797	12	2 811	-	7 572	-	-
Swaziland	41 592	8	2	387	3	400	10	41 182	-	-

Table 4. Number of tourists by country of residence and mode of travel (continued)

Country	Mode of travel (February 2009)									
	Grand Total	Air					Rail	Road	Sea	Unspecified
		Cape Town	Durban	OR Tambo	Other	TOTAL				
Tanzania	1 138	15	-	882	1	898	-	240	-	-
Zambia	11 281	8	-	2 975	12	2 995	-	8 286	-	-
Zimbabwe	63 020	33	1	4 882	36	4 952	8	58 060	-	-
East and Central Africa	5 450	48	3	4 399	17	4 467	3	980	-	-
Burundi	87	-	-	66	1	67	-	20	-	-
Cameroon	283	11	-	253	2	266	-	17	-	-
Central African Republic	7	-	-	6	-	6	-	1	-	-
Chad	19	-	-	19	-	19	-	-	-	-
Comoros	21	-	-	20	-	20	-	1	-	-
Congo	538	13	-	430	-	443	-	95	-	-
Djibouti	6	-	-	6	-	6	-	-	-	-
Equat Guinea	17	-	-	8	2	10	-	7	-	-
Eritrea	43	-	-	39	-	39	-	4	-	-
Ethiopia	821	4	-	470	-	474	1	346	-	-
Gabon	406	1	-	387	5	393	-	13	-	-
Kenya	1 673	11	-	1 504	2	1 517	-	156	-	-
Reunion	65	2	-	62	-	64	-	1	-	-
Rwanda	263	1	-	246	1	248	-	15	-	-
Sao Tome and Principe	14	-	-	11	-	11	-	3	-	-
Seychelles	175	1	3	171	-	175	-	-	-	-
Somalia	204	-	-	9	-	9	-	195	-	-
Tristan Da Cunha	1	-	-	1	-	1	-	-	-	-
Uganda	807	4	-	691	4	699	2	106	-	-
West Africa	4 818	53	-	4 345	24	4 422	1	395	-	-
Ascension	2	-	-	1	-	1	-	1	-	-
Benin	97	8	-	79	-	87	-	10	-	-
Burkina Faso	31	1	-	29	-	30	-	1	-	-
Cape Verde Island	45	-	-	39	-	39	-	6	-	-
Cote D'Ivoire	121	1	-	117	-	118	-	3	-	-
Gambia	35	1	-	25	-	26	-	9	-	-

Table 4. Number of tourists by country of residence and mode of travel (concluded)

Country	Mode of travel (February 2009)									
	Grand Total	Air					Rail	Road	Sea	Unspecified
		Cape Town	Durban	OR Tambo	Other	TOTAL				
Ghana	852	8	-	791	2	801	-	51	-	-
Guinea	106	1	-	58	-	59	-	47	-	-
Guinea-Bissau	10	-	-	5	-	5	-	5	-	-
Liberia	46	2	-	38	-	40	-	6	-	-
Madeira Islands	11	2	-	7	-	9	-	2	-	-
Mali	66	5	-	47	1	53	-	13	-	-
Mauritania	14	1	-	13	-	14	-	-	-	-
Niger	25	2	-	21	-	23	-	2	-	-
Nigeria	3 098	10	-	2 859	21	2 890	1	207	-	-
Saint Helena	2	1	-	1	-	2	-	-	-	-
Senegal	163	7	-	138	-	145	-	18	-	-
Sierra Leone	53	1	-	44	-	45	-	8	-	-
Togo	41	2	-	33	-	35	-	6	-	-
North Africa	899	105	-	740	-	845	-	54	-	-
Algeria	108	23	-	78	-	101	-	7	-	-
Egypt	360	7	-	334	-	341	-	19	-	-
Libya	56	7	-	30	-	37	-	19	-	-
Morocco	79	27	-	51	-	78	-	1	-	-
The Sudan	223	24	-	192	-	216	-	7	-	-
Tunisia	73	17	-	55	-	72	-	1	-	-
Unspecified	2 082	58	-	883	23	964	-	1 116	2	-

Table 5. Number of tourists by country of residence and purpose of visit

Country				
	Grand Total	Business	Holiday	Study
Grand Total	484 275	9 064	467 749	7 462
Overseas	162 714	4 481	157 345	888
Europe	120 371	2 713	117 202	456
Austria	1 890	46	1 840	4
Belgium	2 934	84	2 825	25
Denmark	2 839	35	2 798	6
Finland	1 307	29	1 277	1
France	9 997	229	9 717	51
Germany	20 494	507	19 870	117
Ireland	2 955	52	2 895	8
Italy	2 999	114	2 877	8
Norway	2 483	35	2 434	14
Portugal	1 838	20	1 813	5
Sweden	4 640	90	4 543	7
Switzerland	3 016	65	2 943	8
The Netherlands	9 470	159	9 201	110
UK	46 910	1 006	45 846	58
Other	6 599	242	6 323	34
North America	17 935	538	17 305	92
Canada	3 898	115	3 759	24
USA	14 034	423	13 543	68
Other	3	-	3	-
Central and South America	3 900	54	3 815	31
Argentina	849	3	844	2
Brazil	2 045	15	2 020	10
Chile	318	5	310	3
Other	688	31	641	16
Australasia	6 829	134	6 681	14
Australia	5 616	117	5 489	10

Table 5. Number of tourists by country of residence and purpose of visit (continued)

Country	Purpose of visit (February 2009)			
	Grand Total	Business	Holiday	Study
New Zealand	1 169	12	1 154	3
Other	44	5	38	1
Middle East	2 473	145	2 296	32
Israel	1 151	28	1 120	3
Lebanon	184	31	153	-
Saudi Arabia	438	21	410	7
Other	700	65	613	22
Asia	11 206	897	10 046	263
China	2 409	165	2 152	92
Hong Kong	361	12	348	1
India	2 645	442	2 161	42
Japan	1 227	56	1 167	4
Korea	1 055	30	987	38
Pakistan	757	69	680	8
Singapore	394	27	367	-
Taiwan	627	26	574	27
Thailand	374	13	353	8
Other	1 357	57	1 257	43
Africa	319 479	4 535	309 344	5 600
SADC	308 312	3 932	299 719	4 661
Angola	3 243	60	2 937	246
Botswana	27 185	62	26 300	823
DRC	2 313	75	2 125	113
Lesotho	63 715	52	63 229	434
Madagascar	252	14	231	7
Malawi	10 731	219	10 401	111
Mauritius	1 075	20	1 012	43
Mozambique	72 384	195	72 072	117
Namibia	10 383	1 464	8 410	509
Swaziland	41 592	208	40 738	646

Table 5. Number of tourists by country of residence and purpose of visit (continued)

Country	Purpose of visit (February 2009)			
	Grand Total	Business	Holiday	Study
Tanzania	1 138	80	896	162
Zambia	11 281	1 036	10 017	228
Zimbabwe	63 020	447	61 351	1 222
East and Central Africa	5 450	264	4 527	659
Burundi	87	3	68	16
Cameroon	283	22	186	75
Central African Republic	7	2	5	-
Chad	19	1	18	-
Comoros	21	2	16	3
Congo	538	20	476	42
Djibouti	6	-	6	-
Equat Guinea	17	3	11	3
Eritrea	43	5	37	1
Ethiopia	821	23	778	20
Gabon	406	4	286	116
Kenya	1 673	117	1 349	207
Reunion	65	3	61	1
Rwanda	263	9	196	58
Sao Tome and Principe	14	1	13	-
Seychelles	175	-	170	5
Somalia	204	1	201	2
Tristan Da Cunha	1	-	1	-
Uganda	807	48	649	110
West Africa	4 818	217	4 371	230
Ascension	2	-	2	-
Benin	97	4	92	1
Burkina Faso	31	7	24	-
Cape Verde Island	45	-	44	1
Cote D'Ivoire	121	12	101	8
Gambia	35	4	31	-

Table 5. Number of tourists by country of residence and purpose of visit (concluded)

Country	Purpose of visit (February 2009)			
	Grand Total	Business	Holiday	Study
Ghana	852	20	812	20
Guinea	106	3	99	4
Guinea-Bissau	10	-	10	-
Liberia	46	7	36	3
Madeira Islands	11	-	11	-
Mali	66	10	55	1
Mauritania	14	1	13	-
Niger	25	3	20	2
Nigeria	3 098	119	2 794	185
Saint Helena	2	-	2	-
Senegal	163	23	139	1
Sierra Leone	53	2	48	3
Togo	41	2	38	1
North Africa	899	122	727	50
Algeria	108	6	99	3
Egypt	360	36	320	4
Libya	56	7	46	3
Morocco	79	13	65	1
The Sudan	223	42	143	38
Tunisia	73	18	54	1
Unspecified	2 082	48	1 060	974

EXPLANATORY NOTES

NOTICE

Statistics South Africa (Stats SA) has completed its Duration of Stay exercise as part of improving its information on foreign travellers and measurement of foreign tourists. As a result of this exercise, it is now possible to remove SAME-DAY visitors and OVERNIGHT visitors (tourists) from the foreign arrivals data it receives from the Department of Home Affairs (DHA). That is based on the date on which the arrivals that entered the country for purposes other than work left. Stats SA started publishing information on TOURISTS as defined by United Nations World Tourism Organisation with the January 2009 data. In this month's release additional data (graphs and tables) are provided in the APPENDIX for the benefit of users who would like to continue using foreign arrivals (rather than tourists) as the base denominator for comparison and trend analysis purposes.

1. Introduction

Legal movements across South African borders as well as legal immigration into South Africa fall under the jurisdiction of the DHA. Stats SA then processes and publishes this information.

Administrative data sources from the DHA, that is, information from all the country's ports of entry and applications for permanent residence constitute the only comprehensive source of information on foreign arrivals and departures, documented immigrants and emigrants. The information from this source of data provides the best national coverage (both in terms of space and time) of the population movements of South African residents and foreign travellers. The data:

- can be used to estimate, monitor and understand salient characteristics of foreign travellers and volumes of South African residents travelling outside South Africa;
- provide information that can be used to (a) assess the extent of government's progress in strengthening bilateral political and economic relations by assessing the number of international tourist arrivals; and (b) benchmark surveys focusing on demand for local tourism services by foreign travellers.

The information on documented migrants provides crucial information on receiving countries of South African emigrants which could be targeted in initiatives geared towards attracting back migrants into the country. In addition, the data on permanent residents are valuable in assessing not only the demographic and economic profiles of immigrants but also their contribution to national social and economic programmes.

2. Purpose of the statistical release

This release reports on arrivals and departures of foreign and South African travellers. Detailed information on the gender and age structure; mode of travel; national and regional distribution; and purpose of travel of overnight visitors or tourists are provided.

3. Scope and coverage

This release covers all the data as received from the DHA. The arrivals of foreign travellers are more detailed than departures as they are reported by mode of travel, gender, age and purpose of visit whereas statistics on South African residents are reported by mode of travel. Statistics on documented migration, i.e. self-declared emigrants and documented immigrants, are currently not reported due to the unavailability of data from the DHA.

4. Data

Information published in this release is based on data obtained from the following data sources within the DHA.

- Data routinely collected by immigration officers at all land, air and sea entry ports on all travellers (South African residents and foreign travellers) arriving into or departing from South Africa are captured into the DHA's population Movement Control System (MCS). The counts / statistics relate to the number of individual movements, rather than to the number of people. Hence, the multiple movements of individual people during the calendar month are each counted separately. Generally the data are collected directly from travel documents either by scanning or capturing onto the port's electronic database. No forms or cards are used (except in rare occasions when the capturing system is down) to collect information from travellers. Individual ports regularly transmit data onto the national database at the head office of the DHA.

- Statistics South Africa (Stats SA) downloads the data covering a particular calendar month from the mainframe of the State Information Technology Agency (SITA), where the DHA stores its data.
- As part of data interrogation, data from the OR Tambo International Airport, which has the highest volume of travellers, are compared with passenger statistics from the Airport Company of South Africa (ACSA). As expected, in any specific month, an increase in the volume of passengers reported by ACSA has been accompanied by an increase in the volume of travellers recorded by DHA. A similar pattern was also observed when the volume of travellers decreased. However, the volume of passengers recorded by ACSA is higher than that of the DHA because of, among other reasons, travellers who are in transit and those who boarded airplanes but refused entry into the country. In February 2009, the DHA data was 30,0% lower than that of ACSA.

5. Limitations

The information on the total number of arrivals and departures of South African residents is collected from the scanning of passports. However, data are not collected from passengers on country visited; country of final destination, the duration of stay; intended duration of stay and purpose of visit. With this limitation, it is impossible to identify the number of tourists from the data on South African residents.

Due to unavailability of data from the DHA, information on documented immigrants is not included in this current publication. The documented immigration information will be provided as soon as it is made available to Stats SA.

6. Definition of terms

6.1 Definitions used by the United Nations World Tourism Organisation (UNWTO)

Traveller is someone who moves between different geographical locations for any purpose and any duration

Visitor refers to any person travelling to a place other than that of his/her usual environment for less than 12 months and whose main purpose of the trip is other than the exercise of an activity remunerated from within the place visited.

Same-day visitor is a visitor who visits a place for less than one night.

Tourist (overnight visitor) is a visitor who stays at least one night in collective or private accommodation in the place visited.

Tourism comprises the activities of persons travelling to, and staying in places outside their usual environment, for not more than one consecutive year, for leisure, business and other purposes. The usual environment of a person consists of a certain area around his/her place of residence, plus all other places he/she frequently visits.

6.2 Definitions used specifically in this report

South African resident: refers to either a South African citizen or a non-South African citizen with a South African permanent residence permit.

Foreign traveller: refers to a traveller who is not a South African citizen or permanent resident.

Region: refers to the following country classification: Overseas: Europe, North America, Central and South America, Australasia, the Middle East, Asia. Africa: SADC, East and Central Africa, West Africa and North Africa.

Country: refers to individual countries within a region. The country of residence is used.

Africa: refers to all the countries in Africa (both mainland and island countries).

SADC: refers to the thirteen countries, excluding South Africa, that belong to the Southern African Development Community.

'other' African: refers to all non SADC African countries.

Overseas: refers to all countries outside Africa

7. Symbols and abbreviations used

- = nil
Unspec. = unspecified

General information

Stats SA publishes approximately 300 different statistical releases each year. It is not economically viable to produce them in more than one of South Africa's eleven official languages. Since the releases are used extensively, not only locally but also by international economic and social-scientific communities, Stats SA releases are published in English.

Stats SA has copyright on this publication. Users may apply the information as they wish, provided that they acknowledge Stats SA as the source of the basic data wherever they process, apply, utilise, publish or distribute the data; and also that they specify that the relevant application and analysis (where applicable) result from their own processing of the data.

Advance release calendar

An advance release calendar is disseminated on www.statssa.gov.za

Stats SA products

A complete set of Stats SA publications is available at the Stats SA Library and the following libraries:

National Library of South Africa, Pretoria Division
National Library of South Africa, Cape Town Division
Natal Society Library, Pietermaritzburg
Library of Parliament, Cape Town
Bloemfontein Public Library
Johannesburg Public Library
Eastern Cape Library Services, King William's Town
Central Regional Library, Polokwane
Central Reference Library, Nelspruit
Central Reference Collection, Kimberley
Central Reference Library, Mafikeng

Stats SA also provides a subscription service.

Electronic services

A large range of data are available via on-line services, diskette and computer printouts. For more details about our electronic data, contact user information services.

You can visit us on the Internet at: www.statssa.gov.za

Enquiries

Telephone: (012) 310 8600/ 8390/ 8351/ 4892/ 8496/ 8095 (user information services)
(012) 310 8692 (technical enquiries)
(012) 310 8161 (orders)
(012) 310 4883/4885/8018 (library)

Fax: (012) 310 8500/ 8495 (user information services)
(012) 310 6937 (technical enquiries)

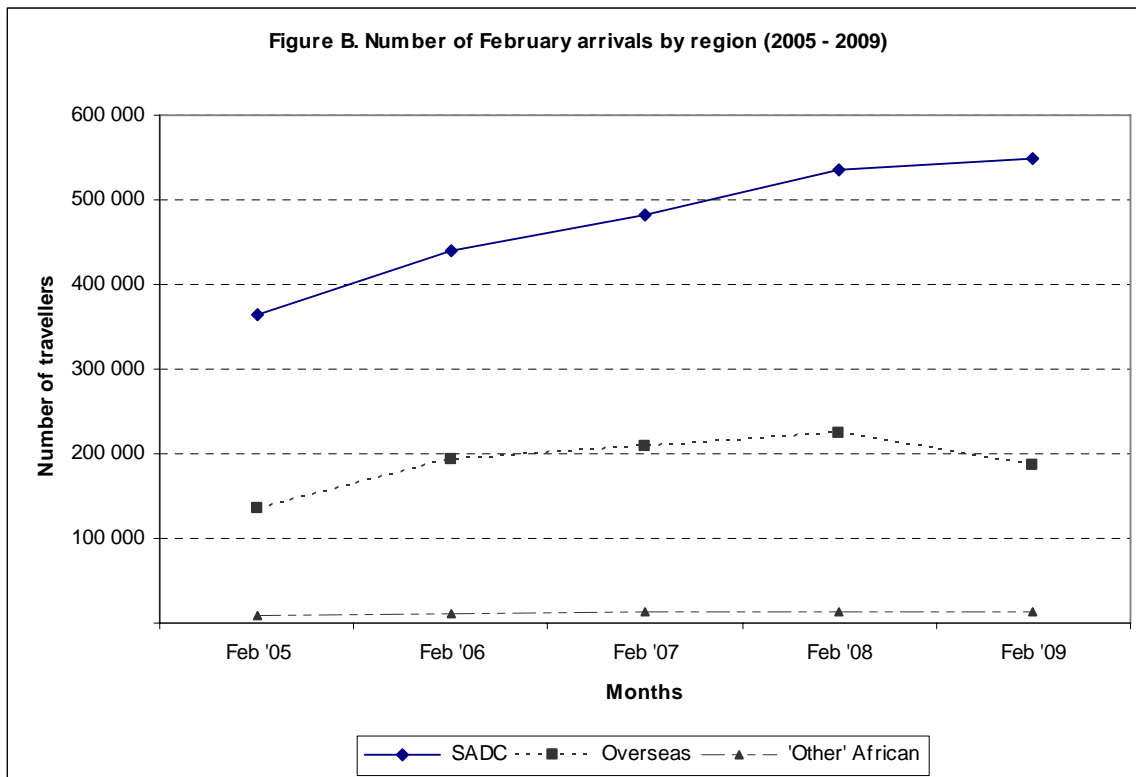
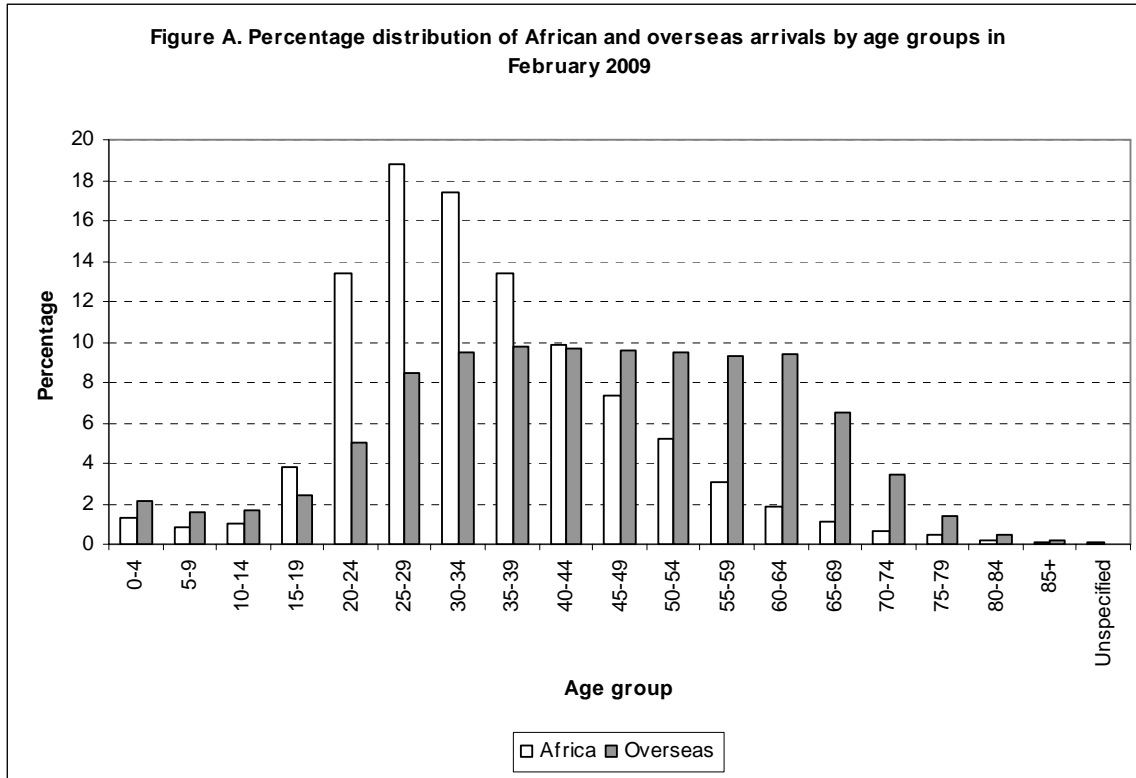
Email: tshwarog@statssa.gov.za (technical enquiries)
info@statssa.gov.za (user information services)
distribution@statssa.gov.za (orders)

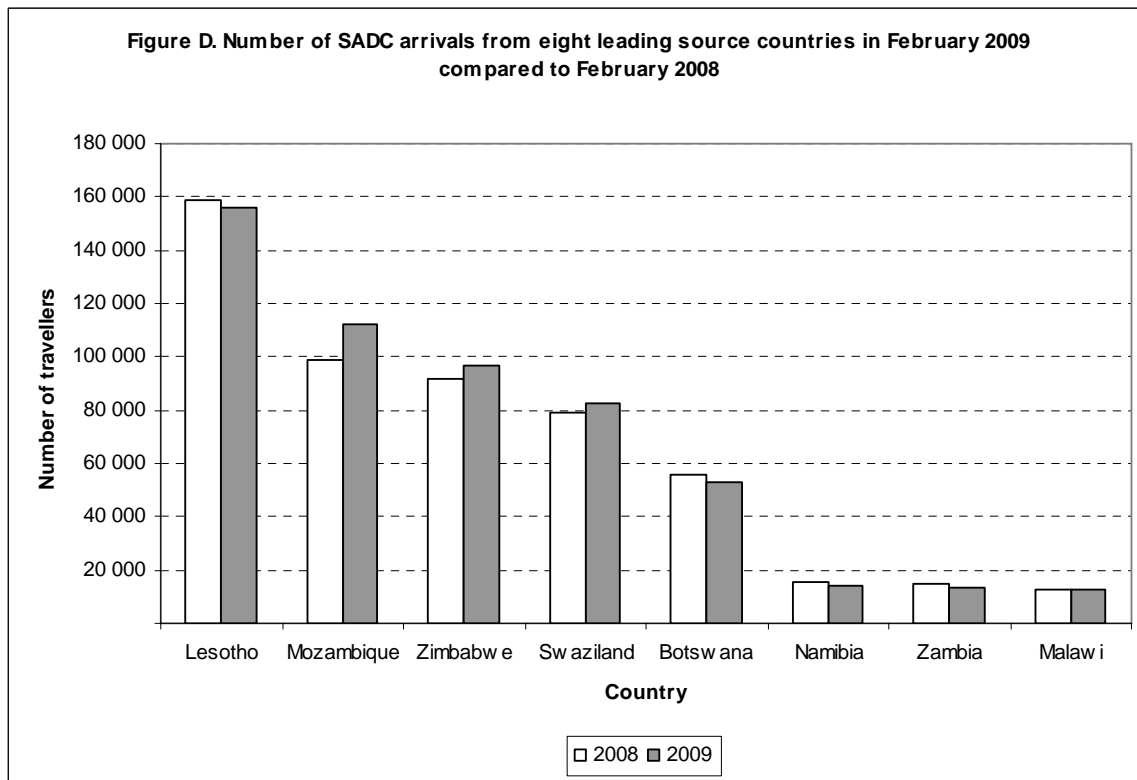
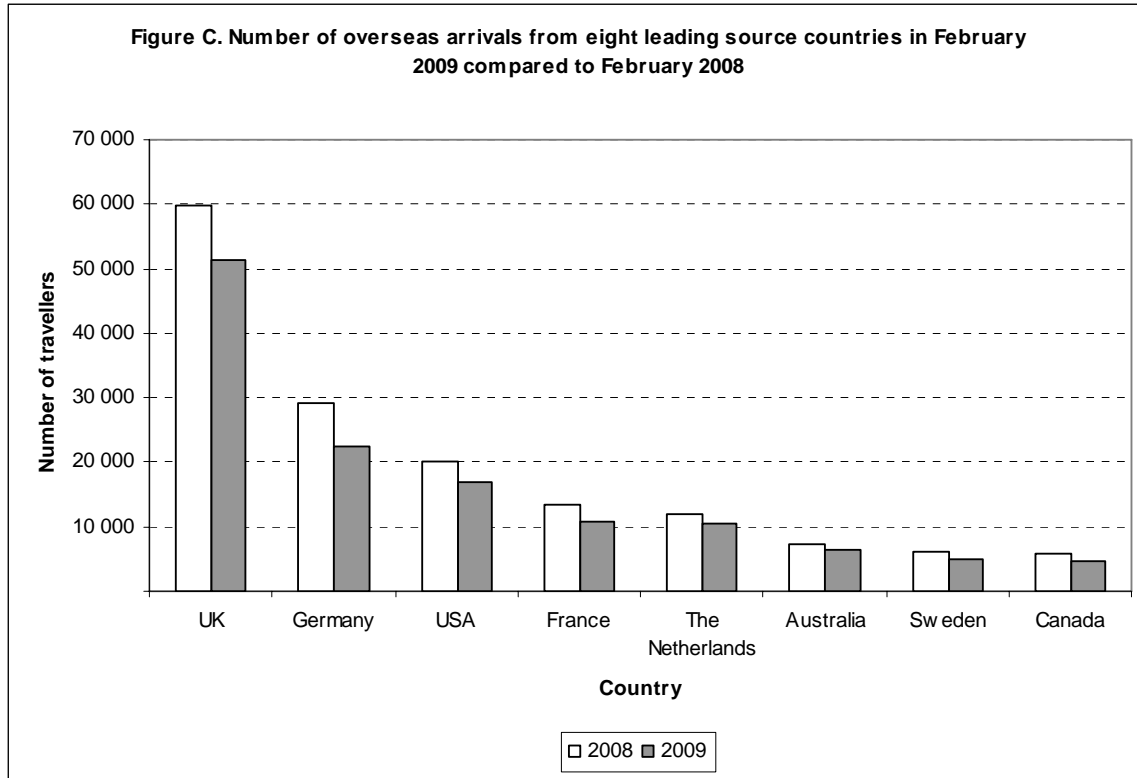
Postal address: Private Bag X44, Pretoria, 0001

Produced by Stats SA

APPENDIX

FEBRUARY 2009 GRAPHS AND TABLES BASED ON FOREIGN ARRIVALS





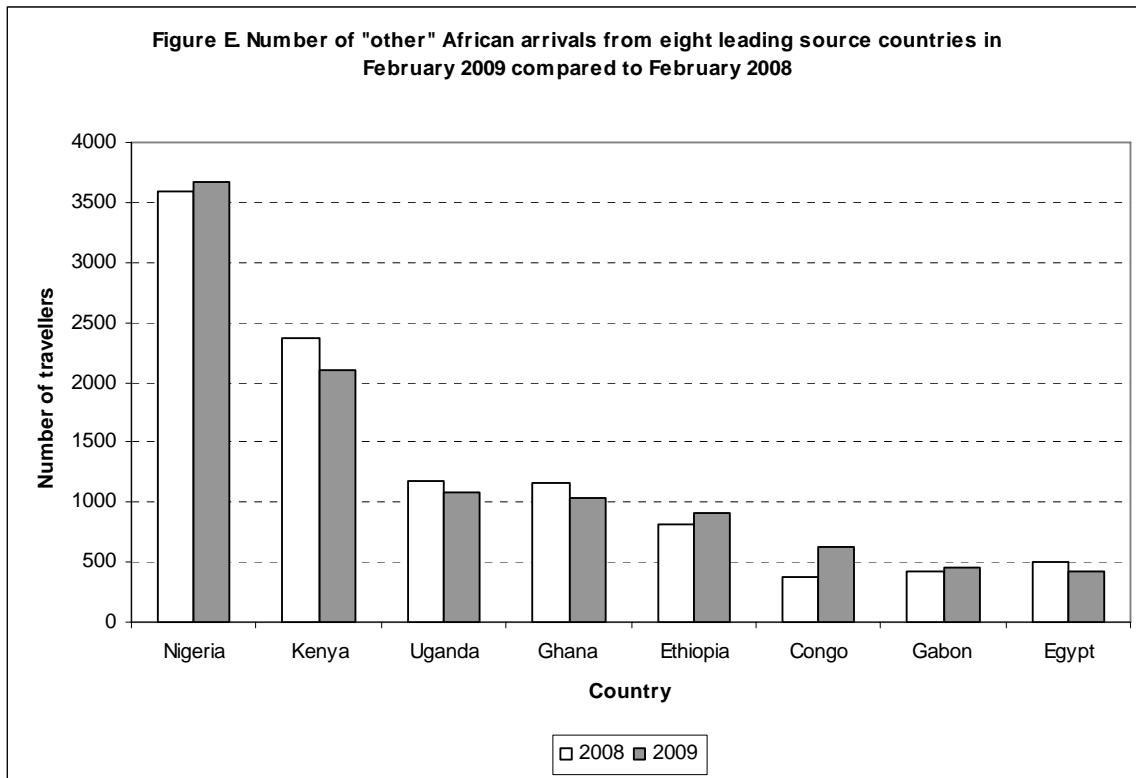


Table A. Number of South African residents and foreign travellers by travel direction

Travel direction	February	January	February	% change	% change
	2008	2009	2009	Feb 08 – Feb 09	Jan 09 – Feb 09
Grand Total	1 992 597	2 447 857	1 915 276	-3,9	-21,8
South African residents	558 154	803 207	524 111	-6,1	-34,7
Arrivals	276 096	482 126	260 753	-5,6	-45,9
Departures	282 058	321 081	263 358	-6,6	-18,0
Foreign travellers	1 434 443	1 644 650	1 391 165	-3,0	-15,4
Arrivals	779 094	920 338	756 524	-2,9	-17,8
Departures	655 349	724 312	634 641	-3,2	-12,4

Table B. Number of South African residents and foreign travellers by travel direction and mode of travel

Travel direction	Total	Mode of travel (February 2009)								
		Air					Rail	Road	Sea	Unspec.
		(Cape Town)	(Durban)	(OR Tambo)	(Other)	Total				
Grand Total	1 915 276	143 889	2 027	445 446	6 798	598 160	78	1 298 732	393	17 913
Arrivals:	1 017 277	74 519	971	226 510	3 479	305 479	69	693 763	176	17 790
South African residents	260 753	13 422	699	79 573	2 459	96 153	2	163 106	35	1 457
Foreign travellers	756 524	61 097	272	146 937	1 020	209 326	67	530 657	141	16 333
Departures:	897 999	69 370	1 056	218 936	3 319	292 681	9	604 969	217	123
South African residents	263 358	13 120	815	84 950	2 469	101 354	2	161 885	77	40
Foreign travellers	634 641	56 250	241	133 986	850	191 327	7	443 084	140	83

Table C. Number of foreign arrivals by country and mode of travel

Country	February		Mode of travel (February 2009)								
	2008	2009	Air					Rail	Road	Sea	Unspecified
			Cape Town	Durban	OR Tambo	Other	Total				
Grand Total	779 094	756 524	61 097	272	146 937	1 020	209 326	67	530 657	141	16 333
Overseas	223 792	186 157	59 022	82	107 157	609	166 870	20	18 687	83	497
Europe	159 234	133 383	51 137	56	68 482	349	120 024	6	13 025	53	275
Austria	2 717	2 037	806	-	1 051	6	1 863	-	173	-	1
Belgium	3 854	3 355	1 088	1	1 795	23	2 907	-	443	-	5
Denmark	3 780	3 083	713	-	2 003	-	2 716	-	363	2	2
France	13 332	10 820	2 081	8	7 624	21	9 734	-	1 084	-	2
Germany	29 109	22 321	8 949	5	10 835	58	19 847	4	2 433	6	31
Ireland	4 152	3 288	1 524	4	1 479	16	3 023	-	256	-	9
Italy	3 764	3 511	986	1	2 158	6	3 151	-	357	-	3
Norway	2 901	2 710	1 078	-	1 329	2	2 409	-	300	-	1
Portugal	2 490	2 616	192	7	1 207	5	1 411	-	1 201	-	4
Spain	2 122	1 477	214	-	1 144	2	1 360	1	116	-	-
Sweden	6 106	5 010	2 170	-	2 317	6	4 493	-	514	3	-
Switzerland	3 937	3 386	1 097	2	1 930	15	3 044	-	338	4	-
The Netherlands	12 038	10 468	4 062	9	4 806	8	8 885	-	1 581	-	2
UK	59 901	51 326	23 599	17	24 207	160	47 983	1	3 115	25	202
Other	8 190	7 975	2 578	2	4 597	21	7 198	-	751	13	13
North America	26 039	21 457	4 239	10	14 741	116	19 106	-	2 310	8	33
Canada	5 939	4 597	1 093	2	2 977	36	4 108	-	481	6	2
USA	20 094	16 857	3 145	8	11 764	80	14 997	-	1 827	2	31
Other	6	3	1	-	-	-	1	-	2	-	-
Central and South America	5 124	4 712	763	2	3 430	18	4 213	-	496	-	3
Argentina	1 012	899	537	-	326	-	863	-	36	-	-
Brazil	2 652	2 530	44	2	2 189	12	2 247	-	281	-	2
Chile	395	379	66	-	281	-	347	-	32	-	-
Other	1 065	904	116	-	634	6	756	-	147	-	1
Australasia	8 739	7 758	666	5	6 489	60	7 220	-	532	-	6
Australia	7 393	6 411	517	5	5 429	56	6 007	-	399	-	5

Table C. Number of foreign arrivals by country and mode of travel (continued)

Country	February		Mode of travel (February 2009)								
	2008	2009	Air					Rail	Road	Sea	Unspecified
			Cape Town	Durban	OR Tambo	Other	Total				
New Zealand	1 254	1 290	145	-	1 026	4	1 175	-	114	-	1
Other	92	57	4	-	34	-	38	-	19	-	-
Middle East	3 389	2 821	292	-	2 314	20	2 626	-	188	-	7
Israel	1 883	1 350	50	-	1 204	2	1 256	-	94	-	-
Lebanon	201	233	26	-	163	1	190	-	42	-	1
Saudi Arabia	415	449	67	-	358	7	432	-	17	-	-
Other	890	789	149	-	589	10	748	-	35	-	6
Asia	21 267	16 026	1 925	9	11 701	46	13 681	14	2 136	22	173
China	5 268	3 588	230	-	3 124	-	3 354	1	201	-	32
India	4 282	3 786	442	4	2 568	16	3 030	7	670	13	66
Japan	2 520	1 577	175	-	1 271	5	1 451	-	125	-	1
Korea	1 847	1 265	133	-	1 024	13	1 170	-	95	-	-
Malaysia	737	470	105	-	323	-	428	-	42	-	-
Pakistan	878	1 061	61	4	635	3	703	3	345	-	10
Philippines	720	812	113	-	591	1	705	1	65	9	32
Singapore	596	467	169	-	267	1	437	-	30	-	-
Taiwan	1 488	880	203	-	434	3	640	-	218	-	22
Other	2 931	2 120	294	1	1 464	4	1 763	2	345	-	10
Africa	549 428	563 303	1 965	190	37 559	349	40 063	47	509 608	1	13 584
SADC	535 708	549 924	1 715	186	26 707	285	28 893	41	507 444	1	13 545
Angola	2 822	3 533	203	-	3 129	27	3 359	-	173	-	1
Botswana	55 441	52 936	18	11	2 125	93	2 247	1	50 608	1	79
DRC	2 432	2 539	1	-	1 840	14	1 855	-	684	-	-
Lesotho	158 585	156 162	5	-	496	36	537	-	143 014	-	12 611
Madagascar	283	296	1	-	277	4	282	-	14	-	-
Malawi	12 723	12 392	2	-	1 797	2	1 801	2	10 583	-	6
Mauritius	1 218	1 240	195	110	810	2	1 117	-	119	-	4
Mozambique	99 111	112 490	96	62	2 292	15	2 465	3	109 909	-	113
Namibia	15 734	14 172	1 114	-	2 080	13	3 207	-	10 944	-	21
Swaziland	78 982	82 569	10	2	593	2	607	14	81 851	-	97

Table C. Number of foreign arrivals by country and mode of travel (continued)

Country	February		Mode of travel (February 2009)								
	2008	2009	Air					Rail	Road	Sea	Unspecified
			Cape Town	Durban	OR Tambo	Other	Total				
Tanzania	1 569	1 324	16	-	961	1	978	-	345	-	1
Zambia	15 104	13 379	10	-	3 563	13	3 586	-	9 790	-	3
Zimbabwe	91 704	96 892	44	1	6 744	63	6 852	21	89 410	-	609
East and Central Africa	6 684	6 557	57	4	5 058	30	5 149	4	1 384	-	20
Burundi	103	96	-	-	73	2	75	-	21	-	-
Cameroon	468	360	13	-	308	2	323	-	37	-	-
Central African Republic	12	7	-	-	6	-	6	-	1	-	-
Chad	10	19	-	-	19	-	19	-	-	-	-
Comoros	7	23	-	-	21	-	21	-	2	-	-
Congo	375	621	16	-	470	-	486	-	133	-	2
Djibouti	3	6	-	-	6	-	6	-	-	-	-
Equat Guinea	23	25	-	-	9	2	11	-	14	-	-
Eritrea	35	48	-	-	41	-	41	-	7	-	-
Ethiopia	813	911	5	-	533	-	538	1	367	-	5
Gabon	425	450	2	-	424	6	432	-	18	-	-
Kenya	2 361	2 104	12	1	1 787	6	1 806	1	295	-	2
Reunion	34	74	2	-	71	-	73	-	1	-	-
Rwanda	342	326	1	-	285	5	291	-	35	-	-
Sao Tome and Principe	7	14	-	-	11	-	11	-	3	-	-
Seychelles	178	186	1	3	177	-	181	-	3	-	2
Somalia	313	207	-	-	10	-	10	-	197	-	-
Tristan Da Cunha	-	1	-	-	1	-	1	-	-	-	-
Uganda	1 175	1 079	5	-	806	7	818	2	250	-	9
West Africa	5 903	5 764	75	-	4 931	32	5 038	2	706	-	18
Ascension	1	6	-	-	2	-	2	-	4	-	-
Benin	138	117	8	-	92	-	100	-	17	-	-
Burkina Faso	68	39	1	-	36	-	37	-	2	-	-
Cape Verde Island	59	54	-	-	44	-	44	-	10	-	-
Cote D'Ivoire	181	155	3	-	147	-	150	-	5	-	-
Gambia	39	44	1	-	30	-	31	-	12	-	1

Table C. Number of foreign arrivals by country and mode of travel (concluded)

Country	February		Mode of travel (February 2009)								
	2008	2009	Air					Rail	Road	Sea	Unspecified
			Cape Town	Durban	OR Tambo	Other	Total				
Ghana	1 162	1 029	9	-	893	8	910	-	118	-	1
Guinea	127	141	1	-	75	-	76	-	65	-	-
Guinea-Bissau	14	13	-	-	7	-	7	-	6	-	-
Liberia	30	51	2	-	39	-	41	-	10	-	-
Madeira Islands	14	16	2	-	8	-	10	-	5	-	1
Mali	104	78	6	-	56	1	63	-	15	-	-
Mauritania	15	18	2	-	16	-	18	-	-	-	-
Niger	24	26	2	-	22	-	24	-	2	-	-
Nigeria	3 589	3 665	24	-	3 210	22	3 256	2	392	-	15
Saint Helena	8	7	1	-	2	-	3	-	4	-	-
Senegal	248	195	8	-	165	1	174	-	21	-	-
Sierra Leone	55	61	1	-	51	-	52	-	9	-	-
Togo	27	49	4	-	36	-	40	-	9	-	-
North Africa	1 133	1 058	118	-	863	2	983	-	74	-	1
Algeria	158	127	24	-	90	-	114	-	13	-	-
Egypt	500	428	11	-	389	1	401	-	27	-	-
Libya	47	64	9	-	33	-	42	-	21	-	1
Morocco	98	92	32	-	58	1	91	-	1	-	-
The Sudan	265	253	25	-	217	-	242	-	11	-	-
Tunisia	65	93	17	-	75	-	92	-	1	-	-
Western Sahara	-	1	-	-	1	-	1	-	-	-	-
Unspecified	5 874	7 064	110	-	2 221	62	2 393	-	2 362	57	2 252

Table D. Number of foreign arrivals by region and purpose of visit

Country	Purpose of visit (February 2009)							Border traffic
	Grand Total	Business	Holiday	Study	Work	Transit	Unspecified	
Grand Total	756 757	10 648	706 729	9 805	11 744	1 728	3	16 100
Overseas	186 390	4 921	173 338	1 038	6 441	386	1	265
Europe	133 383	2 953	127 072	532	2 569	190	-	67
North America	21 457	592	20 127	138	536	31	-	33
Central and South America	4 712	60	4 443	34	135	37	-	3
Australasia	7 758	150	7 460	16	119	11	-	2
Middle East	3 054	182	2 706	35	107	16	-	8
Asia	16 026	984	11 530	283	2 975	101	1	152
Africa	563 303	5 653	531 773	7 420	3 535	1 337	2	13 583
SADC	549 924	4 996	521 025	6 404	2 679	1 274	2	13 544
East and Central Africa	6 557	292	5 111	710	382	42	-	20
West Africa	5 764	234	4 864	254	381	13	-	18
North Africa	1 058	131	773	52	93	8	-	1
Unspecified	7 064	74	1 618	1 347	1 768	5	-	2 252

Table E. Number of foreign arrivals by country and purpose of visit

Country	February		Purpose of visit (February 2009)						Total	Border traffic
	2008	2009	Business	Holiday	Study	Work	Transit	Unspecified		
Grand Total	779 094	756 524	10 615	706 544	9 805	11 732	1 726	3	740 425	16 099
Overseas	223 792	186 157	4 888	173 153	1 038	6 429	384	1	185 893	264
Europe	158 393	133 383	2 953	127 072	532	2 569	190	-	133 316	67
Austria	2 717	2 037	48	1 953	5	28	2	-	2 036	1
Belgium	3 854	3 355	91	3 173	26	58	2	-	3 350	5
Denmark	3 780	3 083	37	2 974	8	59	3	-	3 081	2
France	13 332	10 820	251	10 249	60	252	6	-	10 818	2
Germany	29 109	22 321	551	21 245	128	346	40	-	22 310	11
Ireland	4 152	3 288	57	3 162	10	38	12	-	3 279	9
Italy	3 764	3 511	125	3 283	11	86	3	-	3 508	3
Norway	2 901	2 710	39	2 599	15	49	7	-	2 709	1
Portugal	2 490	2 616	27	2 544	7	26	8	-	2 612	4
Spain	2 122	1 477	45	1 372	3	52	5	-	1 477	-
Sweden	6 106	5 010	100	4 814	7	82	7	-	5 010	-
Switzerland	3 937	3 386	70	3 262	10	37	7	-	3 386	-
The Netherlands	12 038	10 468	167	10 050	120	125	5	-	10 467	1
UK	59 901	51 326	1 103	49 496	80	585	38	-	51 302	24
Other	8 190	7 975	242	6 896	42	746	45	-	7 971	4
North America	26 039	21 457	592	20 127	138	536	31	-	21 424	33
Canada	5 939	4 597	125	4 345	30	91	4	-	4 595	2
USA	20 094	16 857	467	15 779	108	445	27	-	16 826	31
Other	6	3		3					3	
Central and South America	5 124	4 712	60	4 443	34	135	37	-	4 709	3
Argentina	1 012	899	3	882	5	8	1	-	899	-
Brazil	2 652	2 530	19	2 418	10	55	26	-	2 528	2
Chile	395	379	6	360	3	10	-	-	379	-
Other	1 065	904	32	783	16	62	10	-	903	1
Australasia	8 739	7 758	150	7 460	16	119	11	-	7 756	2
Australia	7 393	6 411	132	6 159	12	98	8	-	6 409	2

Table E. Number of foreign arrivals by country and purpose of visit (continued)

Country	February		Purpose of visit (February 2009)							Border traffic
	2008	2009	Business	Holiday	Study	Work	Transit	Unspecified	Total	
New Zealand	1 254	1 290	13	1 255	3	17	2	-	1 290	-
Other	92	57	5	46	1	4	1	-	57	-
Middle East	4 230	2 821	149	2 521	35	95	14	-	2 814	7
Israel	1 883	1 350	30	1 273	3	35	9	-	1 350	-
Lebanon	201	233	33	185	-	12	2	-	232	1
Saudi Arabia	415	449	21	417	7	4	-	-	449	-
Other	1 731	789	65	646	25	44	3	-	783	6
Asia	21 267	16 026	984	11 530	283	2 975	101	1	15 874	152
China	5 268	3 588	178	2 331	92	950	5	-	3 556	32
India	4 282	3 786	479	2 503	46	680	14	-	3 722	64
Japan	2 520	1 577	69	1 410	5	87	5	-	1 576	1
Korea	1 847	1 265	34	1 138	45	41	7	-	1 265	-
Malaysia	737	470	10	403	14	38	5	-	470	-
Pakistan	878	1 061	79	812	9	147	3	1	1 051	10
Philippines	720	812	15	210	7	524	41	-	797	15
Singapore	596	467	29	402	-	35	1	-	467	-
Taiwan	1 488	880	26	647	30	153	3	-	859	21
Other	2 931	2 120	65	1 674	35	320	17	-	2 111	9
Africa	549 428	563 303	5 653	531 773	7 420	3 535	1 337	2	549 720	13 583
SADC	535 708	549 924	4 996	521 025	6 404	2 679	1 274	2	536 380	13 544
Angola	2 822	3 533	64	3 113	260	82	13	-	3 532	1
Botswana	55 441	52 936	86	51 009	1 365	183	215	-	52 858	78
DRC	2 432	2 539	81	2 246	119	69	24	-	2 539	-
Lesotho	158 585	156 162	123	142 041	813	163	411	-	143 551	12 611
Madagascar	283	296	14	245	9	23	5	-	296	-
Malawi	12 723	12 392	299	11 894	128	56	9	-	12 386	6
Mauritius	1 218	1 240	24	1 139	46	20	7	-	1 236	4
Mozambique	99 111	112 490	280	111 726	158	188	25	-	112 377	113
Namibia	15 734	14 172	1 723	11 375	592	73	388	-	14 151	21
Swaziland	78 982	82 569	281	80 876	1 073	178	64	-	82 472	97

Table E. Number of foreign arrivals by country and purpose of visit (continued)

Country	February		Purpose of visit (February 2009)						Total	Border traffic
	2008	2009	Business	Holiday	Study	Work	Transit	Unspecified		
Tanzania	1 569	1 324	82	1 030	177	32	2	-	1 323	1
Zambia	15 104	13 379	1 272	11 717	263	104	20	-	13 376	3
Zimbabwe	91 704	96 892	667	92 614	1 401	1 508	91	2	96 283	609
East and central Africa	6 684	6 557	292	5 111	710	382	42	-	6 537	20
Burundi	103	96	3	74	16	3	-	-	96	-
Cameroon	468	360	21	210	77	51	1	-	360	-
Central African Republic	12	7	2	5	-	-	-	-	7	-
Chad	10	19	1	18	-	-	-	-	19	-
Comoros	7	23	2	17	3	1	-	-	23	-
Congo	375	621	20	519	51	27	2	-	619	2
Djibouti	3	6	-	6	-	-	-	-	6	-
Equat Guinea	23	25	3	19	3	-	-	-	25	-
Eritrea	35	48	5	41	1	1	-	-	48	-
Ethiopia	813	911	25	822	22	36	1	-	906	5
Gabon	425	450	5	308	122	15	-	-	450	-
Kenya	2 361	2 104	133	1 566	223	172	8	-	2 102	2
Reunion	34	74	3	69	1	1	-	-	74	-
Rwanda	342	326	11	225	63	14	13	-	326	-
Sao Tome and Principe	7	14	1	13	-	-	-	-	14	-
Seychelles	178	186	-	178	5	1	-	-	184	2
Somalia	313	207	1	203	2	1	-	-	207	-
Tristan Da Cunha	-	1	-	1	-	-	-	-	1	-
Uganda	1 175	1 079	56	817	121	59	17	-	1 070	9
West Africa	5 903	5 764	234	4 864	254	381	13	-	5 746	18
Ascension	1	6	-	6	-	-	-	-	6	-
Benin	138	117	4	105	1	7	-	-	117	-
Burkina Faso	68	39	8	28	-	3	-	-	39	-
Cape Verde Island	59	54	-	53	1	-	-	-	54	-
Cote D'Ivoire	181	155	13	106	8	28	-	-	155	-
Gambia	39	44	4	35	-	4	-	-	43	1

Table E. Number of foreign arrivals by country and purpose of visit (concluded)

Country	February		Purpose of visit (February 2009)							Total	Border traffic
	2008	2009	Business	Holiday	Study	Work	Transit	Unspecified			
Ghana	1 162	1 029	24	919	20	65	-	-	1 028	1	
Guinea	127	141	3	126	4	6	2	-	141	-	
Guinea-Bissau	14	13	-	11	-	-	2	-	13	-	
Liberia	30	51	7	41	3	-	-	-	51	-	
Madeira Islands	14	16	-	14	-	1	-	-	15	1	
Mali	104	78	11	60	1	4	2	-	78	-	
Mauritania	15	18	2	13	-	1	2	-	18	-	
Niger	24	26	3	21	2	-	-	-	26	-	
Nigeria	3 589	3 665	127	3 077	209	235	2	-	3 650	15	
Saint Helena	8	7	-	6	-	1	-	-	7	-	
Senegal	248	195	24	149	1	18	3	-	195	-	
Sierra Leone	55	61	2	54	3	2	-	-	61	-	
Togo	27	49	2	40	1	6	-	-	49	-	
North Africa	1 133	1 058	131	773	52	93	8	-	1 057	1	
Algeria	158	127	6	110	3	7	1	-	127	-	
Egypt	500	428	37	342	5	39	5	-	428	-	
Libya	47	64	8	48	4	2	1	-	63	1	
Morocco	98	92	13	66	1	12	-	-	92	-	
The Sudan	265	253	42	149	38	23	1	-	253	-	
Tunisia	65	93	25	58	1	9	-	-	93	-	
Western Sahara	-	1	-	-	-	1	-	-	1	-	
Unspecified	5 874	7 064	74	1 618	1 347	1 768	5	-	4 812	2 252	